

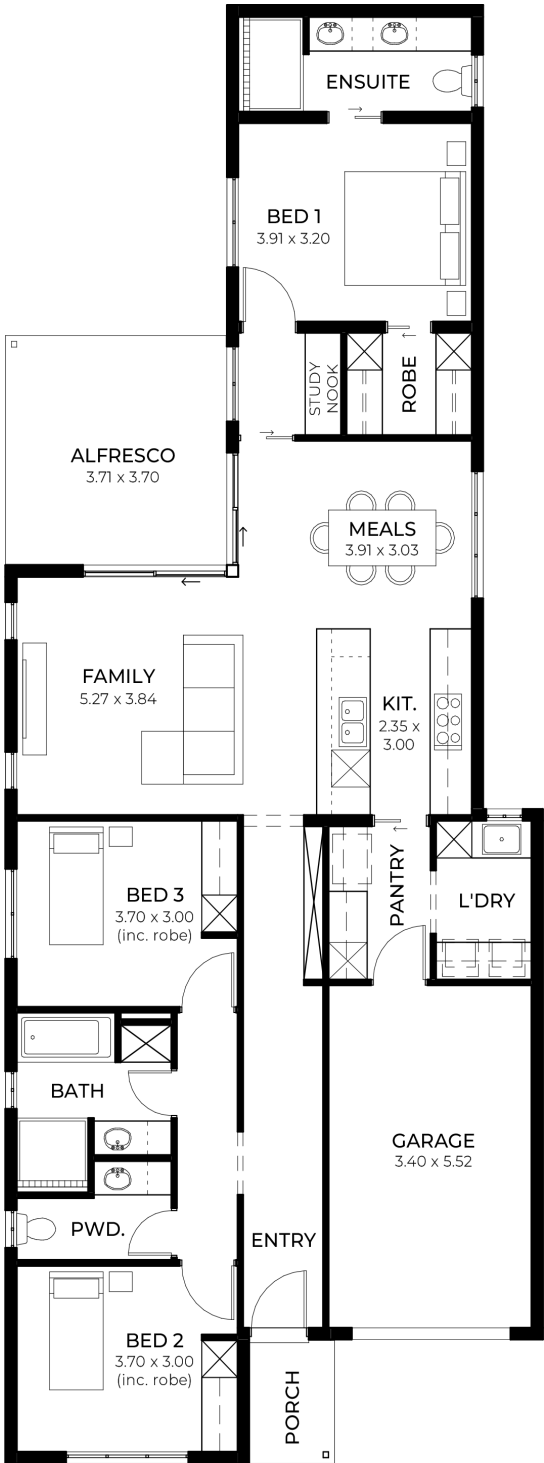
House
and Land
from
\$621,500*

LOT 7338
Carriage Circuit
Munno Para
'Sage 3.5'

Lot Size 300.00m²
Design Sage 3.5
Block Size 300m²
House Size 171m² / 18.50sq
Width 9.00m



3 1 2 1





**Lucky you,
all these
impressive
features are
included with
this home**

Genuine **FIXED PRICE** for 18 months from contract signing

30 Week Build Time (from foundation pour) - fast & efficient

Transparent & Comprehensive - no surprises, no hidden costs

Stress-Free Building Experience - streamlined from start to finish

Thoughtfully Designed Home - created to enhance everyday living

Choice of Premium Facades - elevate your street appeal

Upgrade Option to Aspire Inclusions - premium luxury at your fingertips

Hebel AAC External Walls - enhanced energy efficiency & acoustic comfort

Colorbond Roofing & 6.6kW Solar System - long-lasting and sustainable

Comprehensive Insulation - superior year-round climate control

Gourmet Kitchen - solid surface benchtops, soft-close cabinetry & premium appliances

Luxury Bathroom & Laundry - elegant fixtures & smart storage solutions

Stylish Interior Finishes - high ceilings (2340mm), modern detailing

Advanced Electrical Inclusions - Ring doorbell, Wi-Fi controlled air conditioning & more

Turnkey Finish - includes perimeter & driveway paving, stormwater & termite protection

Footings & Site Works Included fixed price

Price Valid for 14 Days - secure your package today