

House and Land

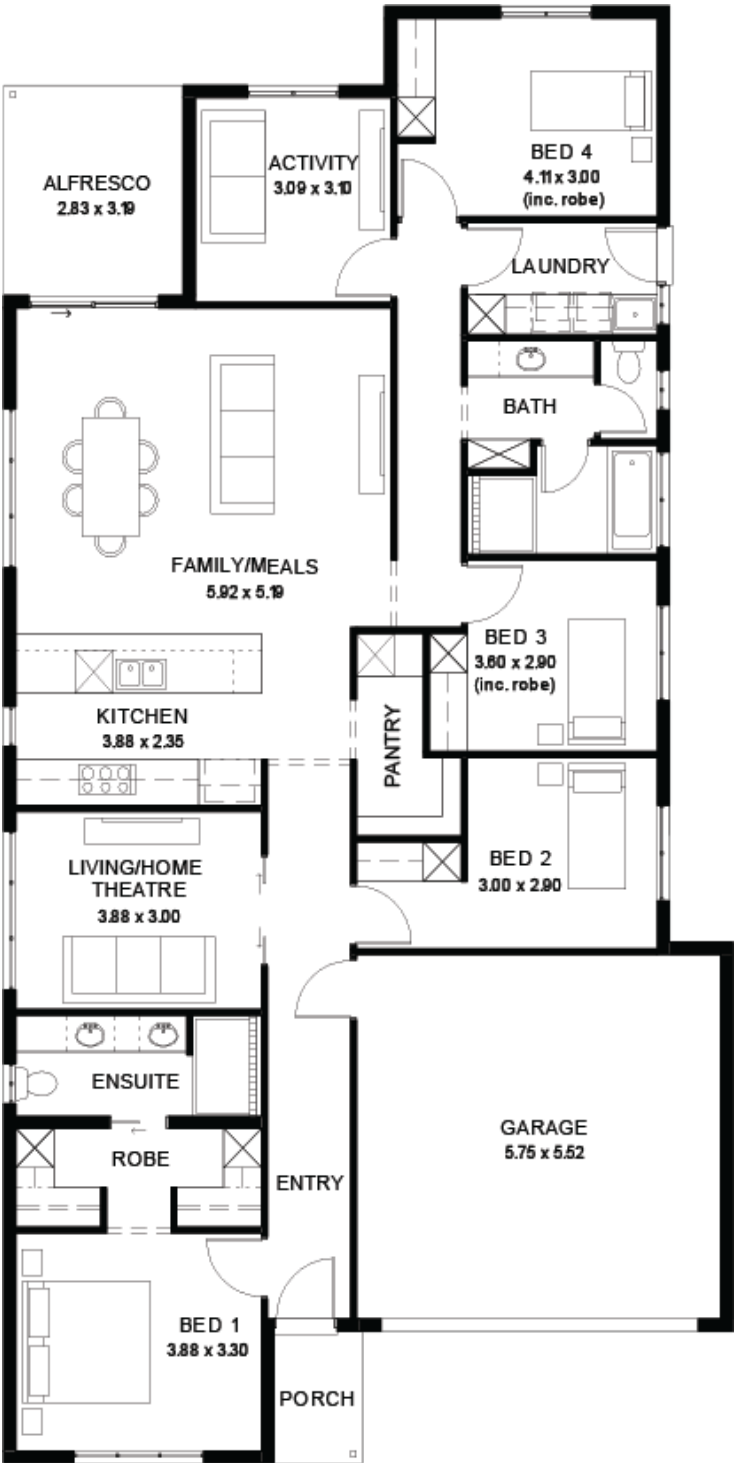
from
\$785,390*

LOT 7502
East Parkway
Mount Barker
'Burgundy 3.5'

Lot Size 559.00m²
Design Burgundy 3.5
Block Size 559m²
House Size 220m² / 23.78sq
Width 11.50m



4 3 2 2





**Lucky you,
all these
impressive
features are
included with
this home**

New Liveable Housing Standards with 7 star energy efficiency including 6.6 kW solar system

18 months fixed price including footings and site works

2.7m ceiling throughout /25 degree roof pitch /450mm eaves

2.3m high doors (external and internal)

Insulation throughout including R 6.0 to ceiling

900mm Westinghouse Appliances to kitchen

Westinghouse Dishwasher

Solid surface benchtop to kitchen and pantry

Built-in robes with mirror finish, drawers and shelving set

Tiled ledge to showers with 1.95m high Milan Semi-Framed Shower Screens

45 litre inset trough to laundry with floorunits and tiling behind

400mm deep overhead cupboards to kitchen and laundry

Auto single span panel to garage

Premium facade as selected or your choice, including slab and tiles

Slab and tiles to alfresco as per plan

Flooring included (Carpets to rooms/Timber laminate to living, kitchen)

Ducted reverse cycle air-conditioning with Wi-Fi control

Fast pre construction process

3 Month Maintenance

25 Year Structural Guarantee