

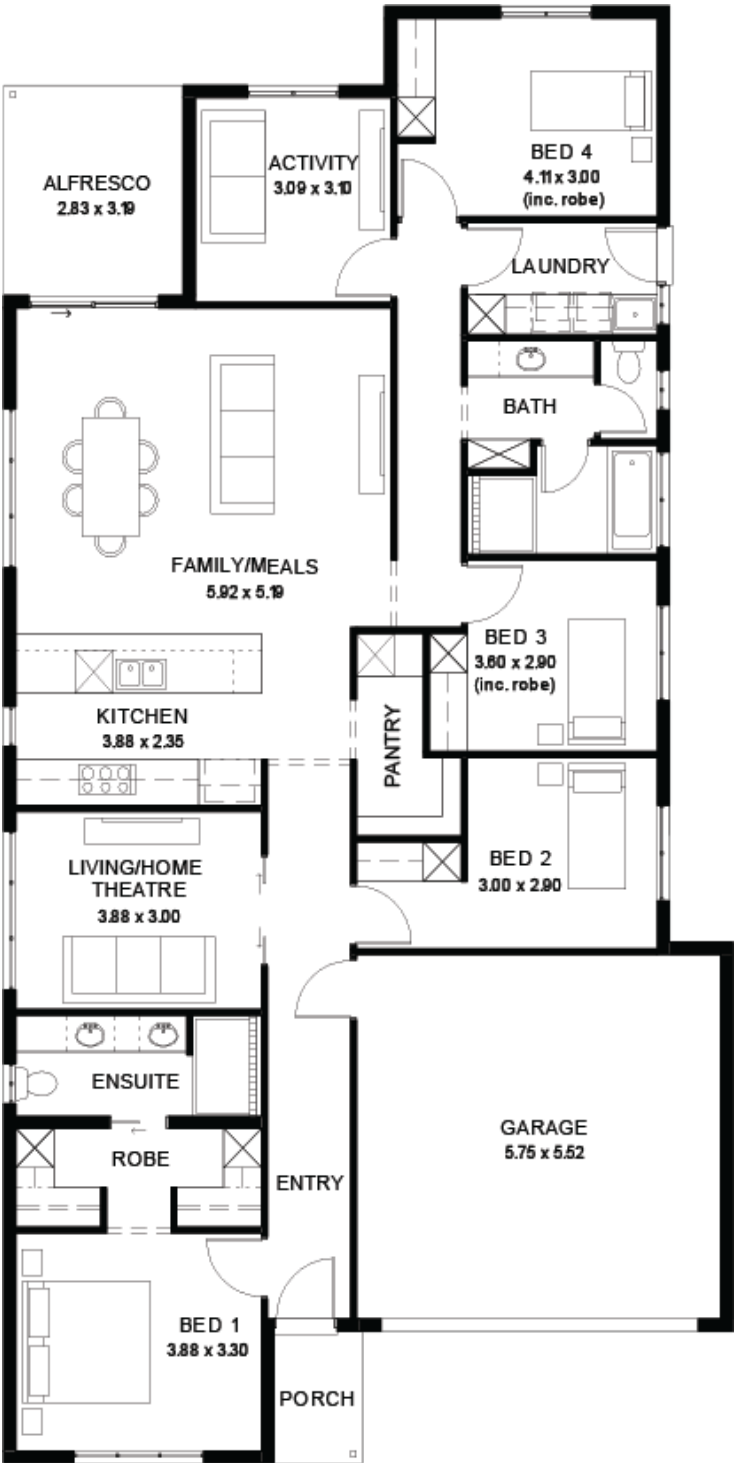
House
and Land
from
\$711,000*

LOT 3912
Carissa Avenue
Riverlea Park
'Burgundy 3.5'

Lot Size 375.00m²
Design Burgundy 3.5
Block Size 375m²
House Size 220m² / 23.78sq
Width 11.50m



4 3 2 2





**Lucky you,
all these
impressive
features are
included with
this home**

Fixed Price Inclusions Package!

Experience luxury, comfort, and efficiency with our premium inclusions, all part of your new home - at a fixed price.

Energy & Climate Efficiency 6.6kW Solar Power System

Eco-friendly and energy-efficient as standard Ducted Reverse Cycle Air Conditioning

Complete home climate control with Wi-Fi connectivity Stylish interior finishes

Lifestyle Carpet

Plush carpeting to all bedrooms, study, and theatre

Timber Laminate Flooring

Sleek and durable finishes to entry, rear hallway, kitchen, meals, and family areas High Ceilings (2700mm)

Enhancing space and luxury throughout the home Comfort & Insulation Comprehensive Insulation Package

R6.0 to ceilings, R2.5 to external walls, R2.0 to internal walls and garage for year-round comfort

Gourmet Kitchen Premium 900mm Westinghouse Appliances - Including oven, cooktop, rangehood and dishwasher 20mm Solid Surface Benchtops

Sleek and durable surfaces in kitchen and pantry

Designer Bathrooms Luxury Inclusions - Featuring square-edge benchtops, semi-framed shower screens, and Luna tapware and accessories.

Built-in Storage Solutions Ample Storage Throughout - Including walk-in robes, mirrored sliding robes, linen cupboards, pantry, and dedicated laundry storage

Outdoor Living Enhancements Entertainers Alfresco (as per the floor plan)

Includes slab, tiling, gas point, and stormwater system for seamless outdoor enjoyment

Perimeter and driveway paving included with storm water disposal!

Compliance Included Encumbrance Requirements - All applicable encumbrance criteria included for hassle-free approvals