

House and Land

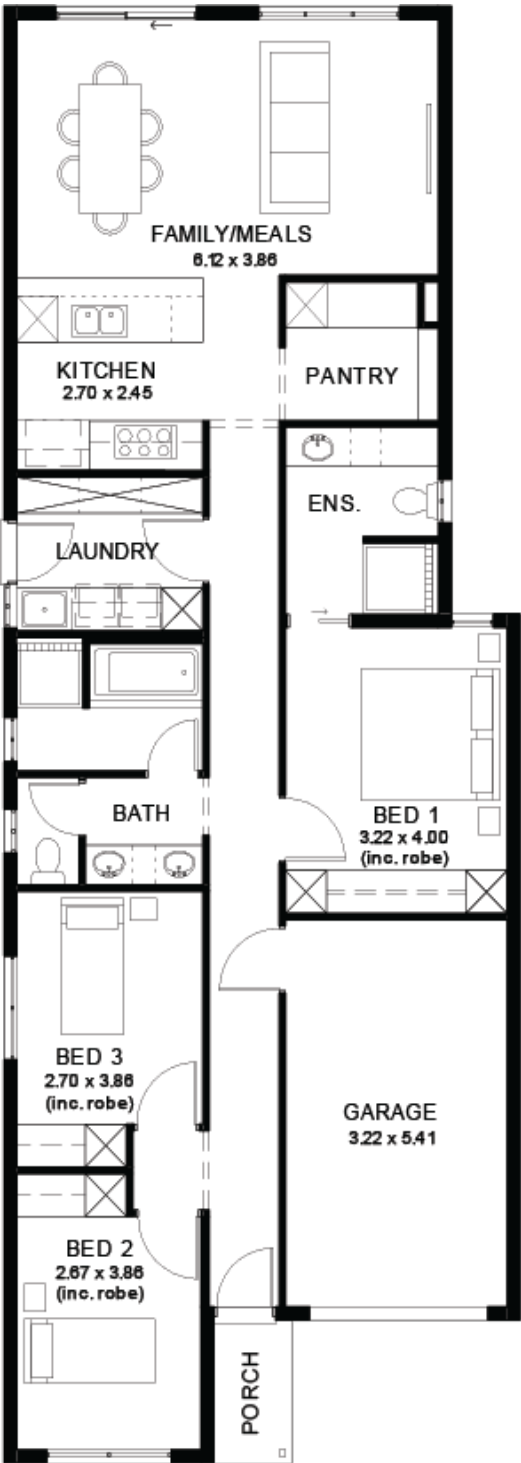
from
\$538,700*

LOT 7242
Islington Crescent
Munno Para
'Lime 3.5'

Lot Size 238.00m²
Design Lime 3.5
Block Size 238m²
House Size 137m² / 14.83sq
Width 7.50m



3 1 2 1





**Lucky you,
all these
impressive
features are
included with
this home**

FIXED PRICE BUILD - Absolutely NO hidden costs

Land titled January 2027

This will sell fast!!

Upgraded facade

Garage with remote control units to panel lift door

2700mm ceilings with high doors

Ensuite to bedroom 1

Full height tiling to bathrooms

900mm cooktop, oven and rangehood

Stone benchtop to kitchen

6.6kW Solar

Built-in robes to bedrooms

Plenty of built-in storage

Carpet to bedrooms

Timber flooring to remainder

Tiled wet areas

Ducted and zoned reverse cycle AC

Colorbond facias and gutters

Overhead cupboards to kitchen

Instantaneous gas hot water

Keylocks to windows

Smoke detectors