

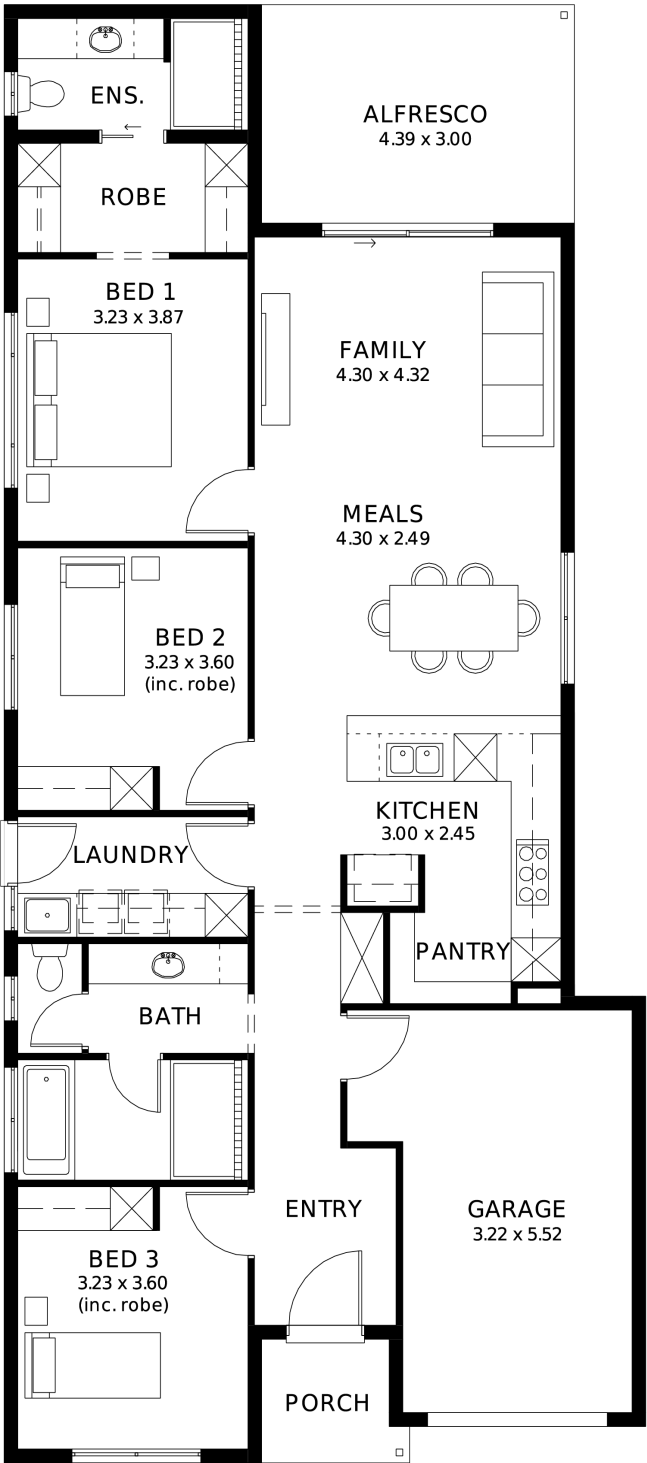
House
and Land
from
\$676,020*

LOT 529
Eric Road
Angle Vale
'Pewter 5.0' (V1.3)

Lot Size 311.00m²
Design Pewter 5.0 (V1.3)
Block Size 311m²
House Size 164m² / 17.73sq
Width 9.00m



3 1 2 1





**Lucky you,
all these
impressive
features are
included with
this home**

Modern design, unbeatable location

18-month fixed price package with a 30-week build time guarantee

Upgraded facade

Garage with remote control units to panel lift door

2700mm ceilings with high doors

Ensuite to master bedroom

900mm cooktop, oven and rangehood

Stone benchtop to kitchen

6.6kW Solar

Built-in robes to bedrooms

Plenty of built-in storage

Carpet to bedrooms

Tiled wet areas

Ducted and zoned reverse cycle AC

Colorbond fascia and gutters

Overhead cupboards to kitchen

Instantaneous gas hot water

Footing price and encumbrance requirements included

Driveway, perimeter path and stormwater included

Turnkey inclusions with perimeter and driveway paving, stormwater and termite protection

3-month maintenance period and a 25-year structural warranty