

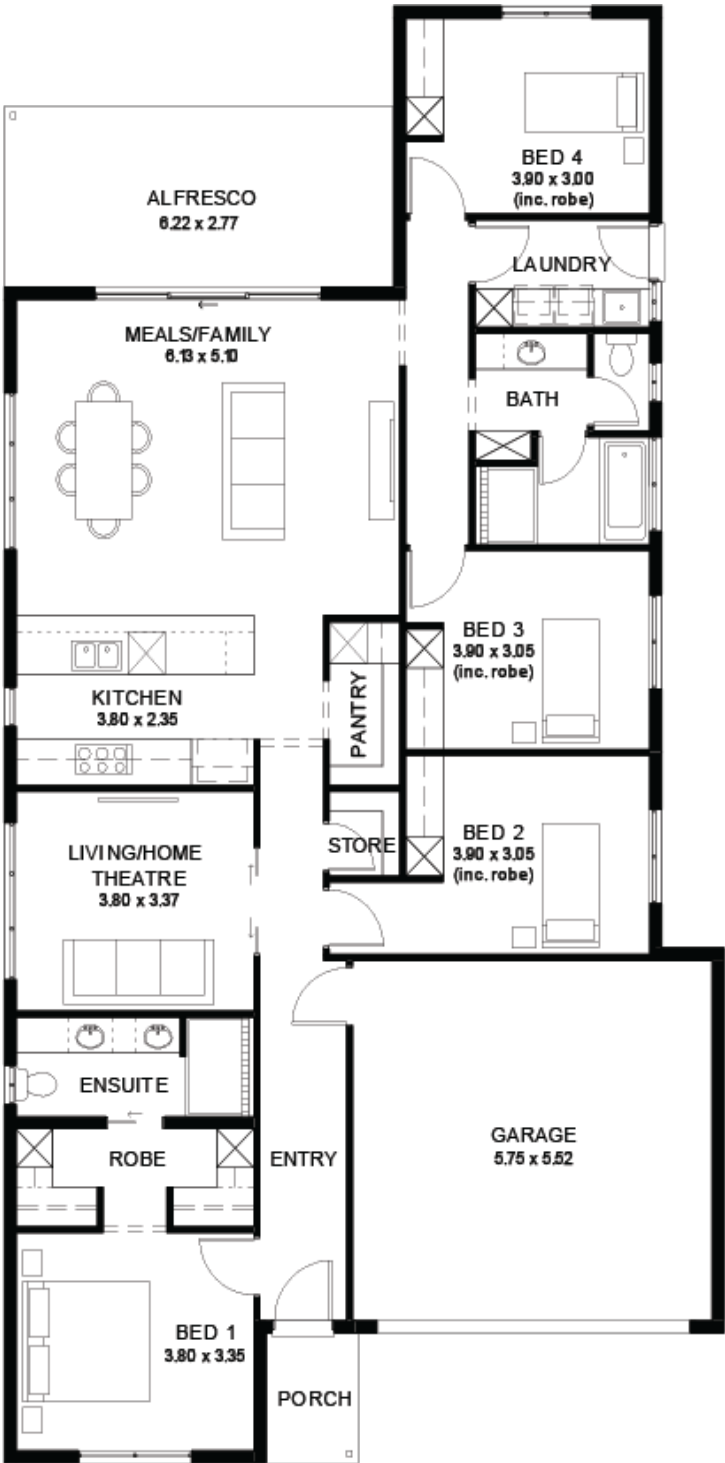
House
and Land
from
\$731,500*

LOT 1915
Silvereye Circuit
Riverlea Park
'Teal 3.5' (v1.2)

Lot Size 375.00m²
Design Teal 3.5 (v1.2)
Block Size 375m²
House Size 221m² / 23.82sqs
Width 11.50m



4 2 2 2





**Lucky you,
all these
impressive
features are
included with
this home**

Situated in the ever growing northern community of Riverlea

Genuine **FIXED PRICE** for 18 months from contract signing

5-Month Build Time (from foundation pour) - fast & efficient

Transparent & Comprehensive - no surprises, no hidden costs

Stress-Free Building Experience - streamlined from start to finish

Thoughtfully Designed Home - created to enhance everyday living

Choice of Premium Facades - elevate your street appeal

Upgrade Option to Aspire Inclusions - premium luxury at your fingertips

Hebel AAC External Walls - enhanced energy efficiency & acoustic comfort

Colorbond Roofing & 6.6kW Solar System - long-lasting and sustainable

Comprehensive Insulation - superior year-round climate control

Gourmet Kitchen - solid surface benchtops, soft-close cabinetry & premium appliances

Luxury Bathroom & Laundry - elegant fixtures & smart storage solutions

Stylish Interior Finishes - high ceilings (2340mm), modern detailing

Advanced Electrical Inclusions - Ring doorbell, Wi-Fi controlled air conditioning & more

Turnkey Finish - includes perimeter & driveway paving, stormwater & termite protection

Footings & Site Works Included fixed price

Price Valid for 14 Days - secure your package today

Phone and Appointment to bring your new home to life