

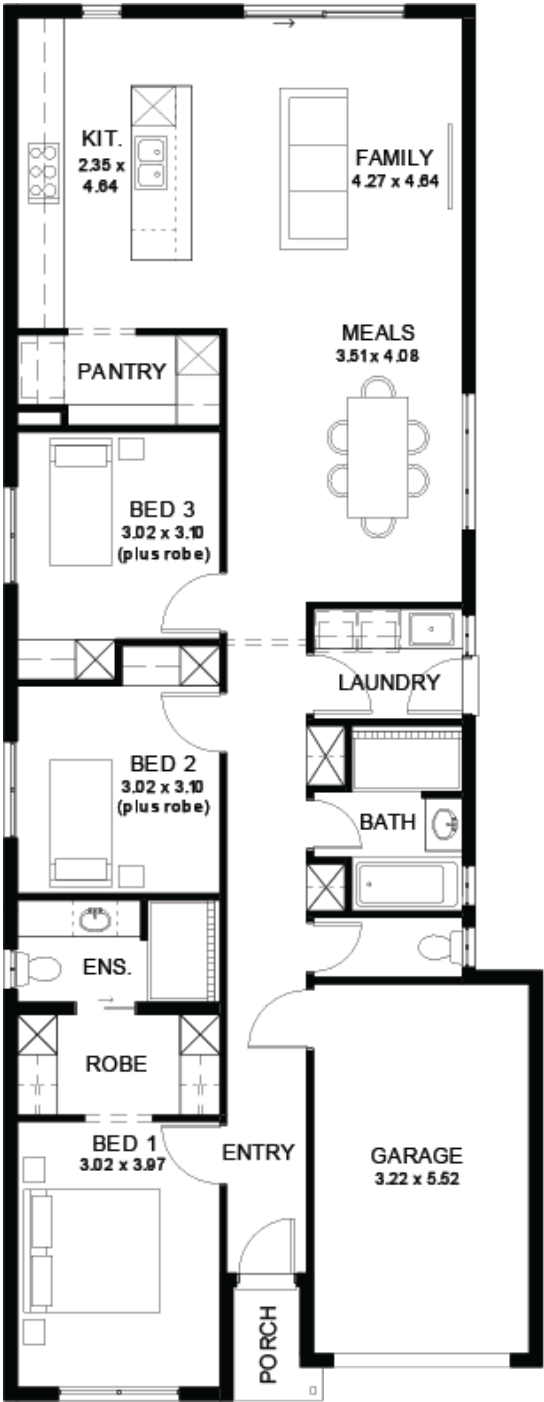
House
and Land
from
\$799,400*

LOT 36
Sandy Way
O'Sullivan Beach
'Ivory 5.0' (V1.2)

Lot Size 300.00m²
Design Ivory 5.0 (V1.2)
Block Size 300m²
House Size 150m² / 16.19sq
Width 8.00m



3 1 2 1





**Lucky you,
all these
impressive
features are
included with
this home**

Secure your future home now - no surprises, just smooth sailing.

Land titling in Mid-End 2026 - nearly ready to go!

30-week build time guarantee - fast, reliable turnaround

Land titling soon - nearly ready to go!

18-month fixed build price - lock in todayâ€™s price for peace of mind

Ducted reverse-cycle air conditioning with Wi-Fi control

6.6kW solar system - reduce your energy bills from day one

2700mm high ceilings throughout - create a spacious, airy feel

Fixed price footings/site costs and encumbrance compliance included

Driveway, perimeter path & stormwater system included

7-Star Energy Compliant

900mm stainless steel appliances and solid surface benchtops

Soft-close joinery throughout

Butler's pantry with solid surface benchtops

Semi-frameless shower screens, tiled ledges & premium tapware

Full-height wall tiling to bathrooms

Recessed kickers to vanities for a sleek finish

Timber-look floors to living areas; plush carpet to bedrooms & theatre

2340mm high internal doors and cavity sliders

Built-in robes with mirrored doors; WIR with shelving and drawers

Awning windows to living areas

Clipsal Iconic switches and ample Double Power points, TV & data points

Overhead cupboards, pull-out bin, broom storage in laundry

Panel lift garage door with remote and rear roller door

Garage and alfresco insulation included

Tiled verandah, alfresco & porch (where applicable to plan)

Gas BBQ point, garden taps & termite barrier

Colorbond roof with 25-degree pitch

3-month maintenance period

25-year structural warranty