

House and Land

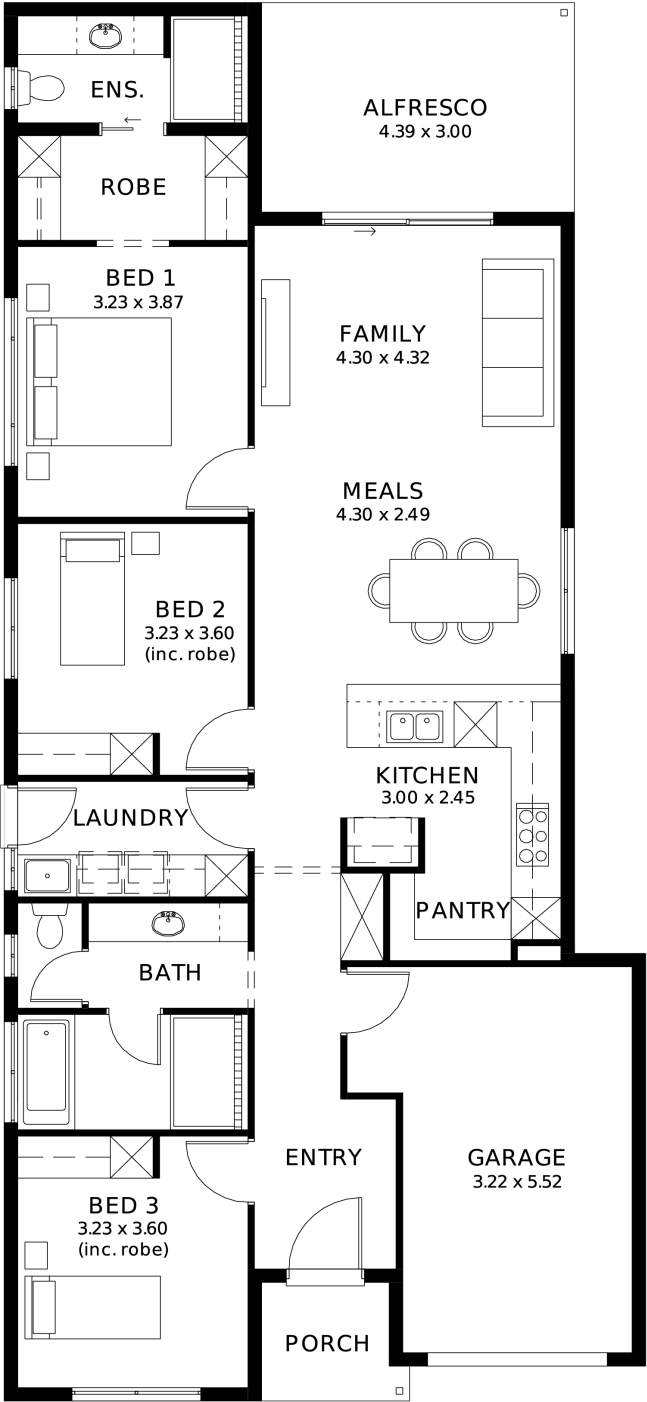
from \$699,500*

LOT 131
Stephen Street
Angle Vale
'Pewter 5.0' (V1.3)

Lot Size 352.00m²
Design Pewter 5.0 (V1.3)
Block Size 352m²
House Size 164m² / 17.73sqsq
Width 9.00m



3 1 2 1





**Lucky you,
all these
impressive
features are
included with
this home**

Genuine **FIXED PRICE** for 18 months from contract signing

30 weeks build time from foundation pour

Transparent and comprehensive pricing with no surprises or hidden costs

Stress-free building experience from start to finish

Thoughtfully designed home to enhance everyday living

Choice of premium facades to elevate street appeal

Option to upgrade to Aspire inclusions for premium luxury

Hebel AAC external walls for energy efficiency and acoustic comfort

Colorbond roofing and 6.6kW solar system for durability and sustainability

Comprehensive insulation for year-round climate control

Gourmet kitchen with solid surface benchtops, soft-close cabinetry and premium appliances

Luxury bathroom and laundry with elegant fixtures and smart storage solutions

Stylish interior finishes with 2340mm high ceilings and modern detailing

Advanced electrical inclusions including Ring doorbell and Wi-Fi controlled air conditioning

Turnkey finish including perimeter and driveway paving, stormwater and termite protection

Footings and site work included in fixed price

Price valid for 14 days

Phone and book an appointment to bring your new home to life