

# House and Land

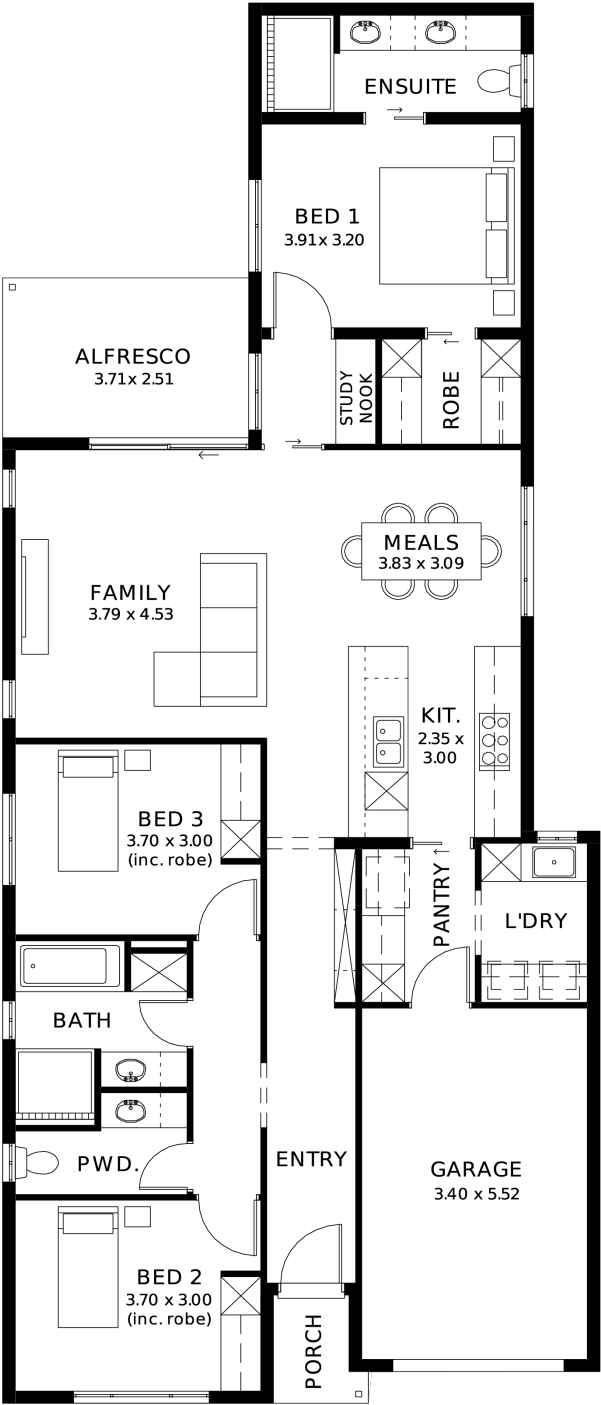
from \$788,800\*

LOT 141  
Stephen Street  
Angle Vale  
'Sage 5.0' (V1.2)

Lot Size 438.00m<sup>2</sup>  
Design Sage 5.0 (V1.2)  
Block Size 438m<sup>2</sup>  
House Size 167m<sup>2</sup> / 18.00sqsq  
Width 9.00m



3 1 2 1





**Lucky you,  
all these  
impressive  
features are  
included with  
this home**

Located in a well-designed new estate with landscaped streets and parklands that enhance community living.

A safe, tranquil neighbourhood ideal for families, professionals or investors.

30-week build guarantee for peace of mind

18-month fixed price!

Choice of premium facades to suit your personal style

Thoughtfully designed, well-planned floorplan for modern living

2.7m high ceilings enhancing space and natural light

Entertainer-style kitchen with quality finishes, perfect for hosting

Full-height tiling to ceiling in bathroom and ensuite

Interior colour selections by some of Adelaide's leading designers

Driveway paving, stormwater connection, and termite protection included