

House and Land

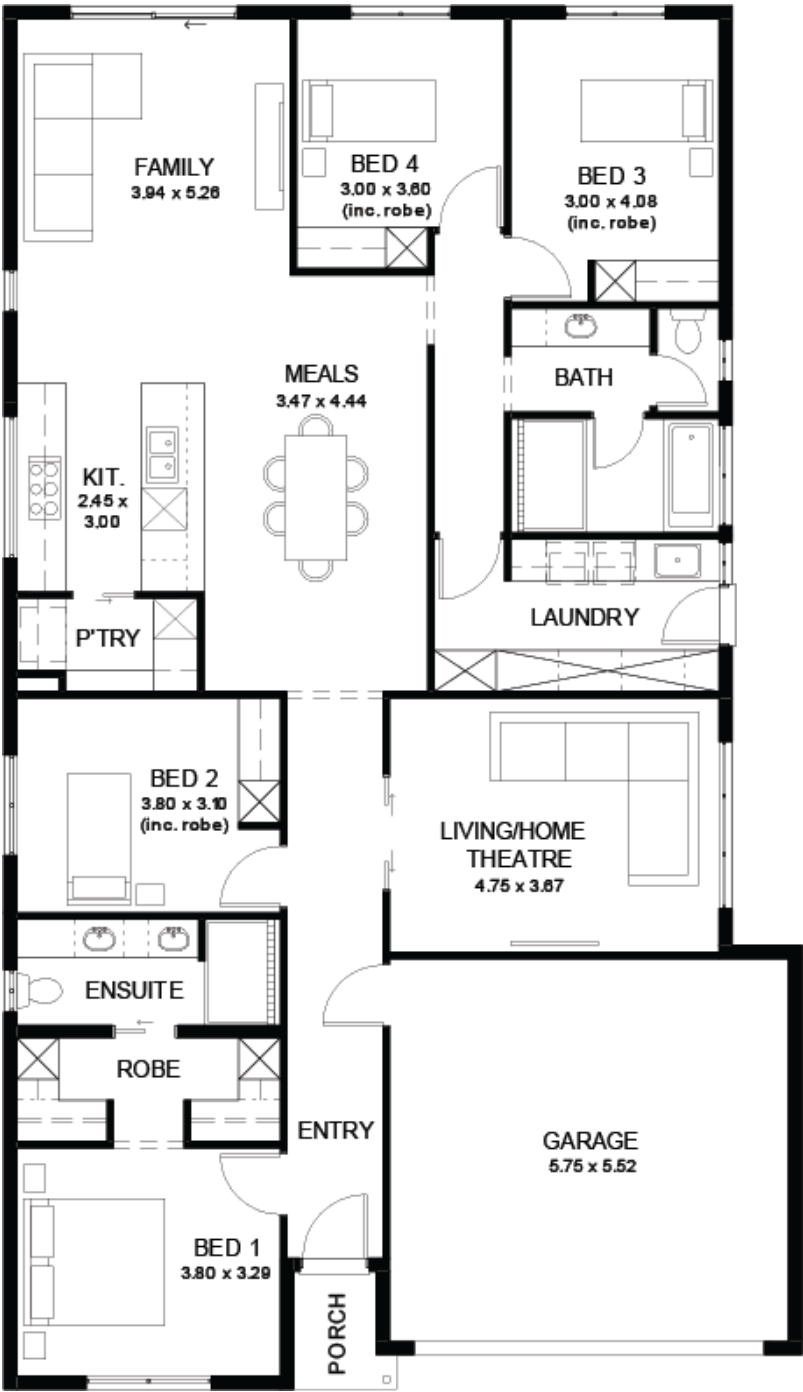
from \$798,100*

LOT 5
Stewart Court
Cawler South
'Turquoise 5.0' (V1.2)

Lot Size 525.00m²
Design Turquoise 5.0 (V1.2)
Block Size 525m²
House Size 212m² / 22.92sq
Width 11.50m



4 2 2 2





**Lucky you,
all these
impressive
features are
included with
this home**

Premium new house and land opportunity in Woodvale, a sought-after land release in Gawler South offering quality allotments with a semi-rural feel just minutes from town.

30-week build guarantee for peace of mind

18-month fixed price!

Choice of premium facades to suit your personal style

Thoughtfully designed, well-planned floorplan for modern living

2.7m high ceilings enhancing space and natural light

Entertainer-style kitchen with quality finishes, perfect for hosting

Full-height tiling to ceiling in bathroom and ensuite

Interior colour selections by some of Adelaide's leading designers

Driveway paving, stormwater connection, and termite protection included