

House and Land

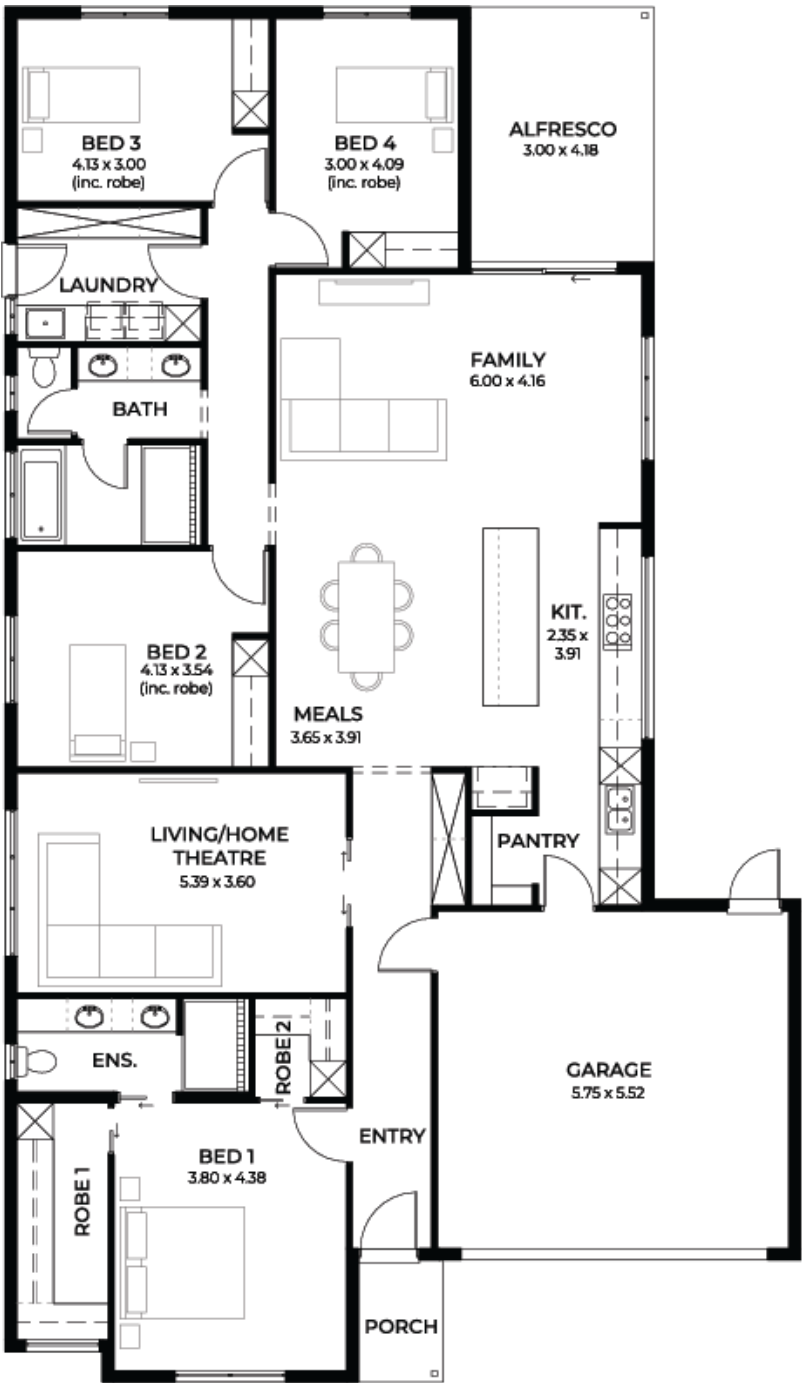
from
\$874,100*

LOT 1235
Mozart Circuit
Evanston Gardens
'Olive 3.5' (v1.0)

Lot Size 613.00m²
Design Olive 3.5 (v1.0)
Block Size 613m²
House Size 244m² / 26.36sqsq
Width 13.00m
Depth 23.00m



4 2 2 2



Joanne Caruso 0447 631 130

joannec@sahousingcentre.com.au [sahousingcentre.com.au](https://www.sahousingcentre.com.au)

* Terms and Condition's apply. For full details go to [sahousingcentre.com.au/terms-and-conditions/](https://www.sahousingcentre.com.au/terms-and-conditions/)



**Lucky you,
all these
impressive
features are
included with
this home**

Genuine **FIXED PRICE** for 18 months from contract signing

Transparent, comprehensive, and unlike any quote you will see elsewhere

No surprises, no guesswork, just a streamlined, stress-free building experience

30-week build time guarantee

Fantastic location- **TITLED** and ready to build on

Exceptional house and land package, thoughtfully designed to enhance your living experience

Choice of premium facades

Option to upgrade to Aspire Inclusions

Hebel AAC dwelling with enhanced energy efficiency

Premium roofing with Colorbond materials and 6.6kW solar

Comprehensive insulation for superior climate control

Gourmet kitchen with top-tier appliances, solid surface benchtops, and soft-close cabinetry

Luxury bathroom and laundry with elegant fittings and storage solutions

Thoughtful interior finishes, high ceilings, and 2340mm tall doors

Advanced electrical features including Ring doorbell and Wi-Fi AC

Turnkey inclusions with perimeter and driveway paving, stormwater, and termite protection

FIXED PRICE footings and site works included

Price valid for 14 days

More options available