

# House and Land

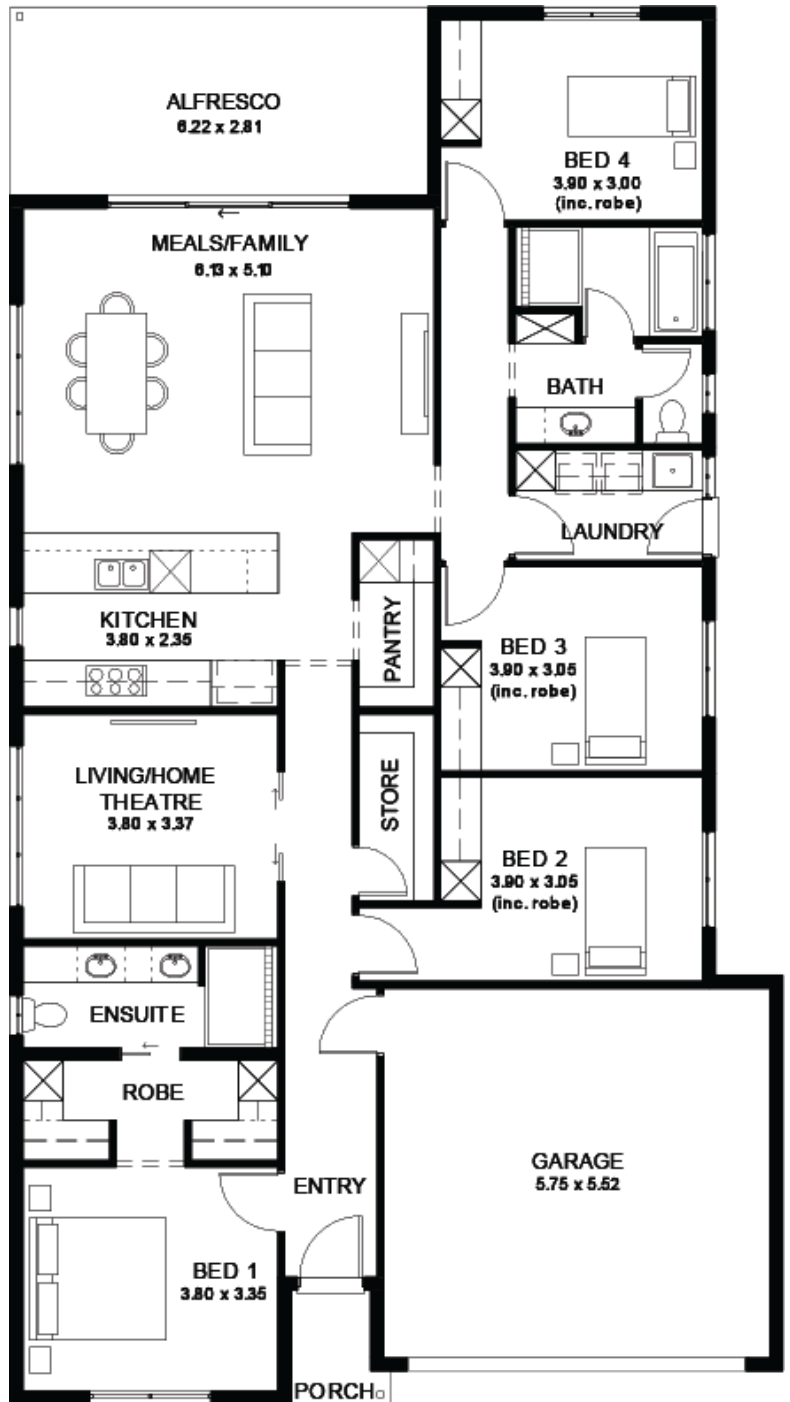
from **\$815,600\***

LOT 900  
 Prosecco Avenue  
 Angle Vale  
 'Teal 5.0' (V1.3)



Lot Size 400.00m<sup>2</sup>  
 Design Teal 5.0 (V1.3)  
 Block Size 400m<sup>2</sup>  
 House Size 222m<sup>2</sup> / 23.93sq  
 Width 11.50m

 4  2  2  2



**SA** HOUSING CENTRE

**Mausam Shah 0415 334 429**

mausams@hickinbotham.com.au [sahousingcentre.com.au](http://sahousingcentre.com.au)

\* Terms and Condition's apply. For full details go to [sahousingcentre.com.au/terms-and-conditions/](http://sahousingcentre.com.au/terms-and-conditions/)



**Lucky you,  
all these  
impressive  
features are  
included with  
this home**

#### Fixed Price Package

30-week build time + 18-month price guarantee

Footing price and encumbrance requirements included in fixed price!

2700mm high ceilings throughout

6.6kW solar system for energy savings

Ducted reverse-cycle air conditioning with Wi-Fi control

Colorbond roof with 25-degree pitch

Kitchen with 900mm appliances, solid benchtops, and soft-close drawers

Timber-look flooring to living areas; carpet to bedrooms and theatre

R6.0 ceiling insulation, plus insulation to walls, garage, and alfresco

Panel lift garage door with remote, rear roller door, and lighting

Tiled verandah, alfresco, and porch

Bathrooms with semi-frameless showers, tiled niches, and premium fittings

Solid surface benchtops in kitchen and pantry

2340mm internal doors and cavity sliding doors

Built-in robes with mirrors; walk-in robe with shelving and drawers

Laundry with overhead cupboards, pull-out bin, and broom storage

Vanities with soft-close drawers and recessed kickers

Clipsal Iconic light switches, TV/data points, and power outlets throughout

Outdoor features: gas BBQ point, garden taps, termite barrier

3-month maintenance period + 25-year structural warranty

Driveway, perimeter path and Stormwater included