

House and Land

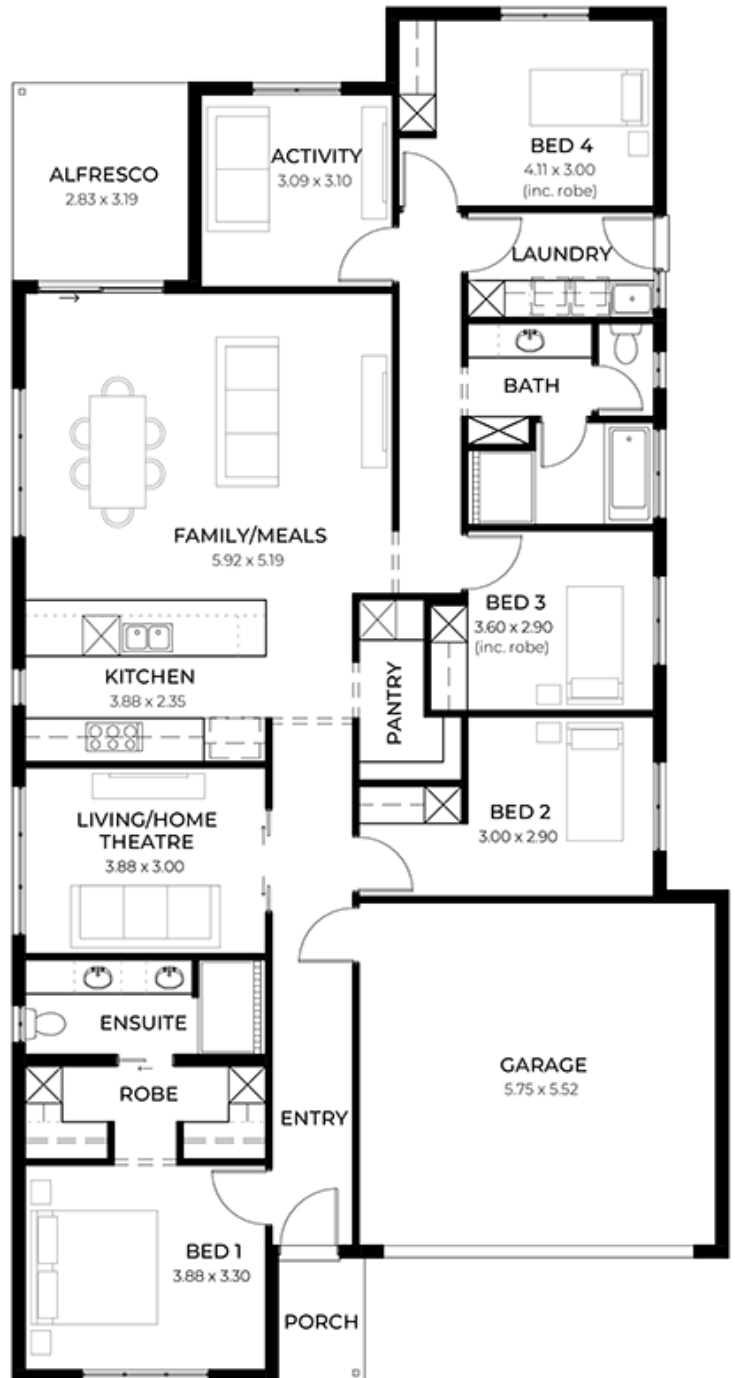
from **\$828,100***

LOT 37
Viewpoint Circuit
Craigmore
'Burgundy 3.5' (V1.3)

Lot Size 375.00m²
Design Burgundy 3.5 (V1.3)
Block Size 375m²
House Size 220m² / 23.78sq
Width 11.50m



4 3 2 2



SA HOUSING
CENTRE

Dallas Chivers 0405 808 434

dallasc@sahousingcentre.com.au sahousingcentre.com.au

* Terms and Condition's apply. For full details go to sahousingcentre.com.au/terms-and-conditions/



**Lucky you,
all these
impressive
features are
included with
this home**

Located in Craigmore Living Estate

30 weeks build time from foundation pour

Stress-free building experience from start to finish

Thoughtfully designed home to enhance everyday living

Choice of premium facades to elevate street appeal

Option to upgrade to Aspire inclusions for premium luxury

Hebel AAC external walls for energy efficiency and acoustic comfort

Colorbond roofing and 6.6kW solar system for durability and sustainability

Comprehensive insulation for year-round climate control

Gourmet kitchen with solid surface benchtops, soft-close cabinetry and premium appliances

Luxury bathroom and laundry with elegant fixtures and smart storage solutions

Stylish interior finishes with 2340mm high ceilings and modern detailing

Advanced electrical inclusions including Ring doorbell and Wi-Fi controlled air conditioning

Turnkey finish including perimeter and driveway paving, stormwater and termite protection

Price valid for 14 days

Phone and book an appointment to bring your new home to life