

# House and Land

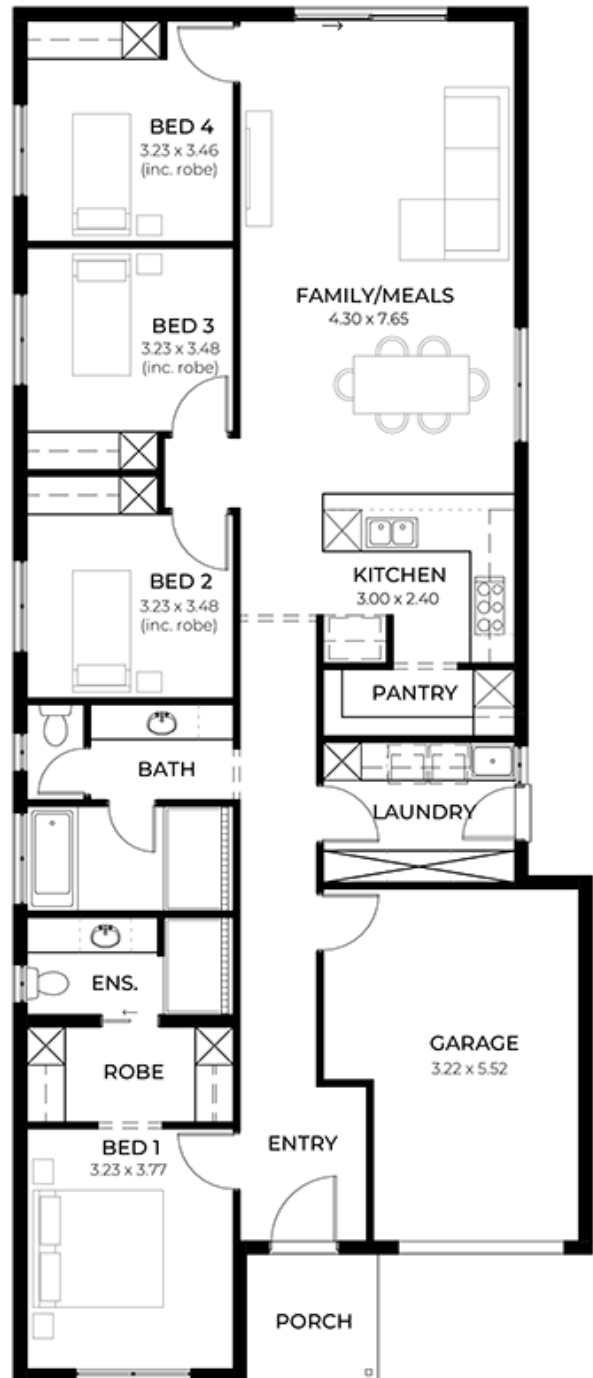
from **\$733,900\***

LOT 1206  
Spyridium Avenue  
Andrews Farm  
'Onyx 3.5 (V1.3)'

Lot Size 300.00m<sup>2</sup>  
Design Onyx 3.5 (V1.3)  
Block Size 300m<sup>2</sup>  
House Size 173m<sup>2</sup> / 18.62sqgs  
Width 9.00m



4 1 2 1



**SA** HOUSING CENTRE

**Vinny Bhatti 0432 862 197**

vinnyb@hickinbotham.com.au [sahousingcentre.com.au](http://sahousingcentre.com.au)

\* Terms and Condition's apply. For full details go to [sahousingcentre.com.au/terms-and-conditions/](http://sahousingcentre.com.au/terms-and-conditions/)



**Lucky you,  
all these  
impressive  
features are  
included with  
this home**

18-month fixed price including footings and site works

30-week build time guarantee

Perimeter and driveway paving included (up to 5.5m setback) with storm water disposal

Energy & Climate Efficiency - 6.6kW solar power system

2.7m ceiling throughout / 25-degree roof pitch / 450mm eaves

Garage with remote control units to panel lift door

Ducted reverse cycle air conditioning - complete home climate control with Wi-Fi connectivity

900mm Westinghouse Appliances to kitchen, with a Westinghouse Dishwasher

Designer tape ware and sanitary ware

Shower Ledges and soft closing joineries

Full-height tiling to ensuite and bathroom

Flooring included, with carpets to rooms and timber laminate to living and kitchen

Built-in robes with mirror finish, drawers and shelving set

Stylish interior finishes

Choice of premium facades

3-month maintenance

25-year structural guarantee