

House and Land

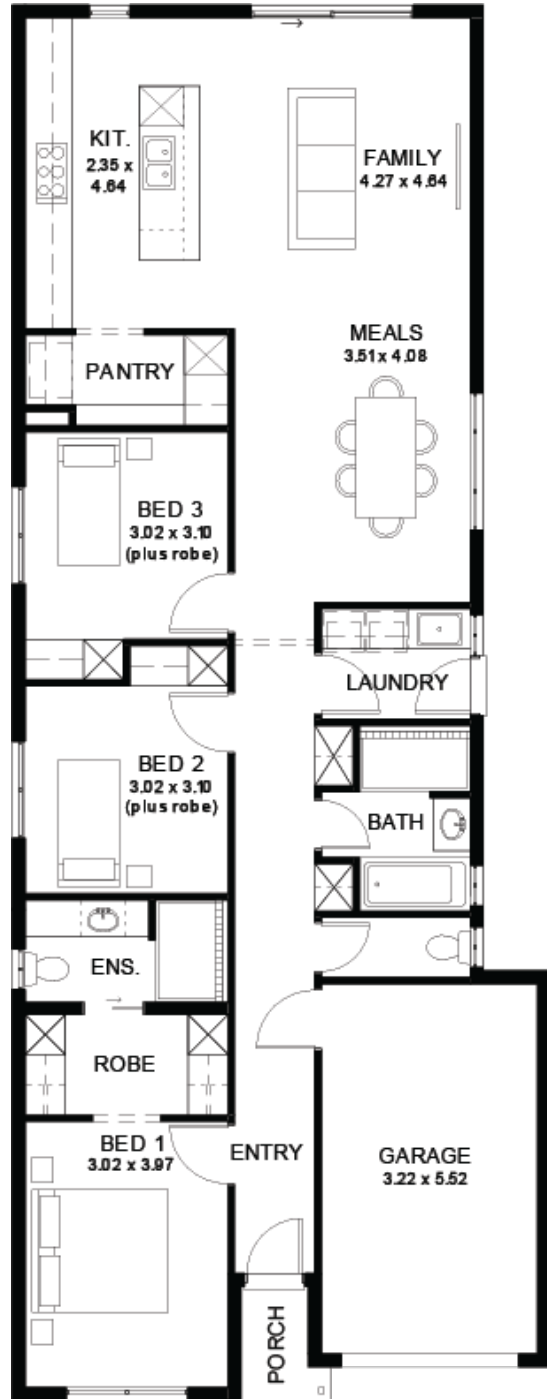
from **\$701,600***

LOT 131
Stephen Street
Angle Vale
'Ivory 5.0' (V1.3)

Lot Size 352.00m²
Design Ivory 5.0 (V1.3)
Block Size 352m²
House Size 150m² / 16.19sqs
Width 8.00m



3 1 2 1



SA HOUSING CENTRE

Dinesh Koggala 0422 245 894

dineshk@hickinbotham.com.au sahousingcentre.com.au

* Terms and Condition's apply. For full details go to sahousingcentre.com.au/terms-and-conditions/



**Lucky you,
all these
impressive
features are
included with
this home**

Modern design, unbeatable location

A smart move for first home buyers or Investors!

30-week build time guarantee

Upgraded facade

Garage with remote control units to panel lift door

2700mm ceilings with high doors

Ensuite to Bed 1

900mm cooktop, oven and rangehood

Stone benchtop to kitchen

6.6kW Solar

Built-in robes in bedrooms

Plenty of built in storage

Carpet to Bedrooms

Timber flooring to remainder

Tiled wet areas

Ducted and zoned reverse cycle AC

Colorbond facias and gutters

Overhead cupboards to kitchen

Instantaneous gas hot water

Footing price and encumbrance requirements included

Driveway, perimeter path & stormwater system included

3-month maintenance period + 25-year structural warranty

This is more than a house - it's your next chapter

let's talk today!?