

House and Land

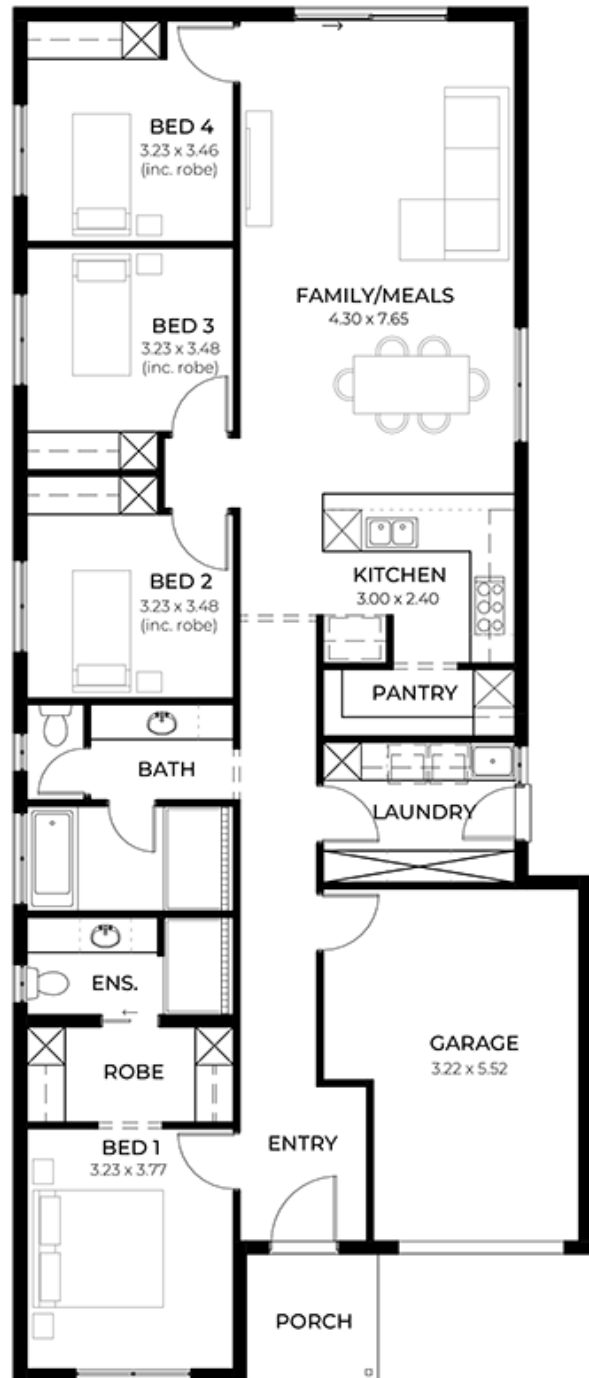
from
\$716,700*

LOT 624
Crabb Avenue
Andrews Farm
'Onyx 3.5 (V1.3)'

Lot Size 300.00m²
Design Onyx 3.5 (V1.3)
Block Size 300m²
House Size 173m² / 18.62sqgs
Width 9.00m



4 1 2 1



SA HOUSING
CENTRE

Roshan Kulatunga 0415 544 058

roshank@sahousingcentre.com.au sahousingcentre.com.au

* Terms and Condition's apply. For full details go to sahousingcentre.com.au/terms-and-conditions/



**Lucky you,
all these
impressive
features are
included with
this home**

Experience luxury, comfort and efficiency with our premium inclusions

6.6kW solar power system

Ducted reverse cycle air conditioning with Wi-Fi connectivity

Plush lifestyle carpet to bedrooms, study and theatre

Highly sort after floor to ceiling tiles in bathrooms already included!

Sleek timber laminate flooring to entry, rear hallway, kitchen, meals and family areas

High ceilings 2700mm enhancing space and luxury

Comprehensive insulation package with R6.0 to ceilings, R2.5 to external walls and R2.0 to internal walls and garage for year-round comfort

Premium 900mm Westinghouse oven, cooktop, rangehood and dishwasher

20mm solid surface benchtops in kitchen and pantry

Square edge benchtops, semi-framed shower screens and Luna tapware and accessories

Walk-in robes, mirrored sliding robes, linen cupboards, pantry and dedicated laundry storage

Entertainers alfresco as per floor plan with slab, tiling, gas point and stormwater system

Perimeter and driveway paving included with stormwater disposal