

House and Land

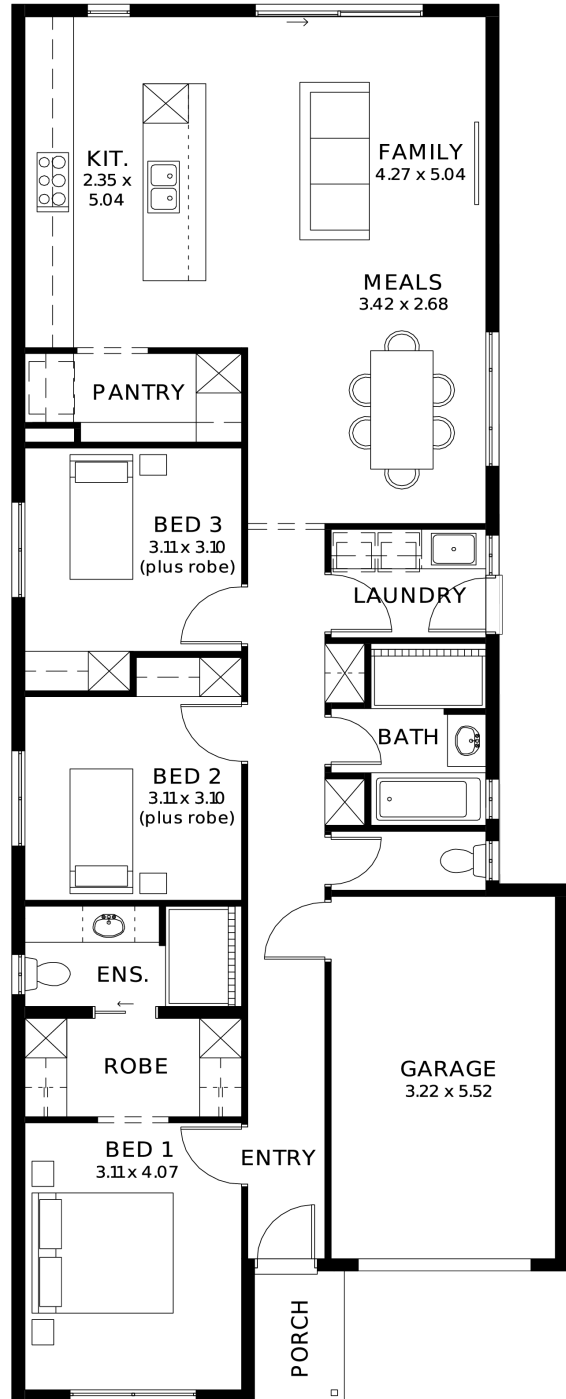
from **\$703,700***

LOT 3447
Griffith Way
Riverlea Park
'Ivory 3.5' (V1.3)

Lot Size 381.00m²
Design Ivory 3.5 (V1.3)
Block Size 381m²
House Size 150m² / 16.21sq
Width 8.00m



3 1 2 1





**Lucky you,
all these
impressive
features are
included with
this home**

Built in 30 weeks, what's not to love!

With over 95 standard inclusions,
here's a few we think you'll like:

2700mm ceilings with 2340mm high
doors for an elevated look & feel

Large 900mm Westinghouse cooktop
for those who love to cook or entertain

Stainless steel dishwasher

Ducted reverse-cycle air conditioning
with Wi-Fi controller

Carpet to cosy areas and timber look
flooring to main areas

Floor-to-ceiling tiles to bathroom and
ensuite

Fully paved perimeter and driveway

6.6kW solar system

And so much more!!

What are you waiting for?

Enquire today, or meet me in person
at the Andrews Farm Brookmont
display