

House and Land

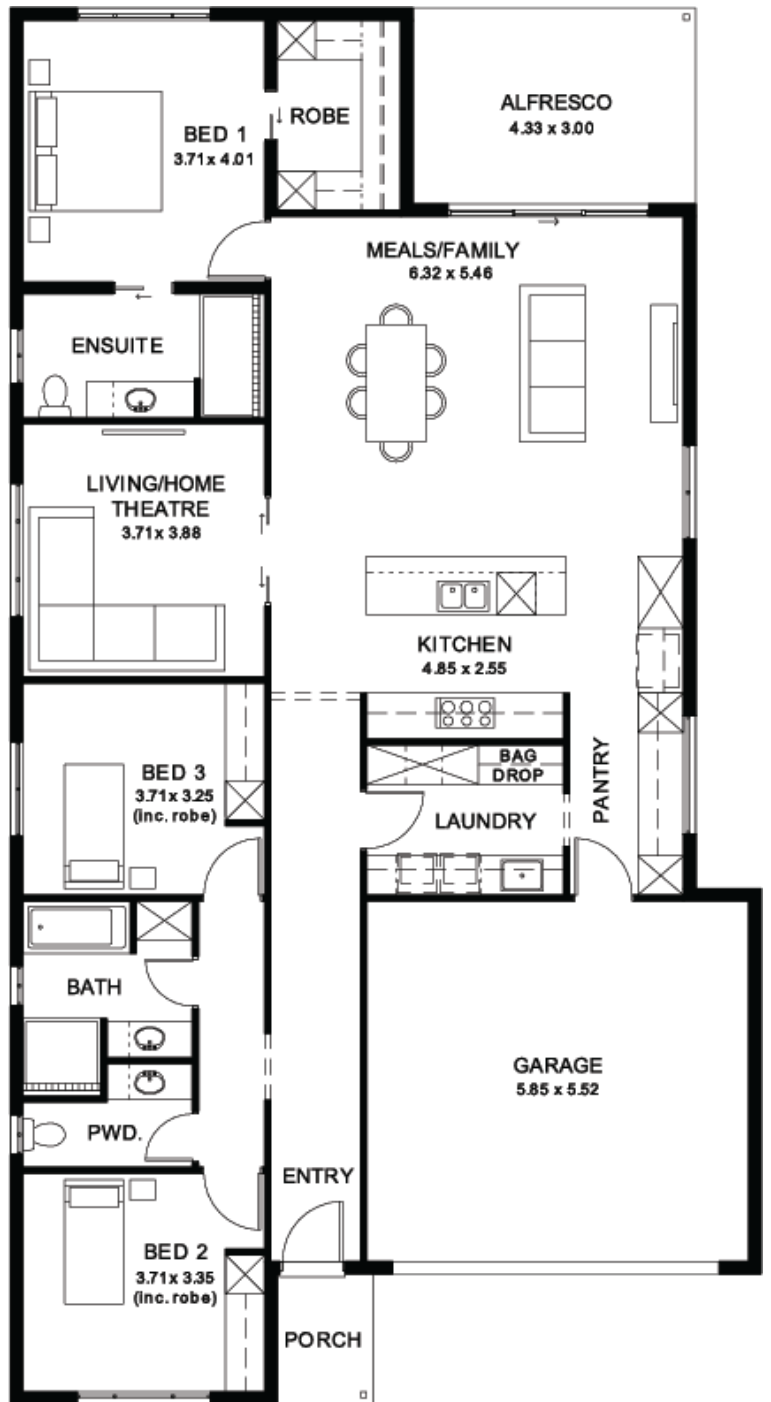
from **\$891,700***

LOT 1560
New Road
Cawler East
'Tangerine 3.5' (V1.4)

Lot Size 474.00m²
Design Tangerine 3.5 (V1.4)
Block Size 474m²
House Size 220m² / 23.75sqs
Width 11.50m



 3
  2
  2
  2



SA HOUSING CENTRE

Joanne Caruso 0447 631 130

joannec@sahousingcentre.com.au sahousingcentre.com.au

* Terms and Condition's apply. For full details go to sahousingcentre.com.au/terms-and-conditions/



**Lucky you,
all these
impressive
features are
included with
this home**

Everything Included from Quoting Stage

Simple 4-step process to lock in your new home options

Fast 30-week construction with a well-established builder you can trust

Premium facades and Aspire upgrade option available

Energy-smart Hebel home with solar and premium roofing and insulation

Designer interiors: gourmet kitchen, luxe bathrooms, high ceilings

Tech-ready living: Ring doorbell + Wi-Fi AC

Turnkey finish with flooring, AC, paving, stormwater + termite protection

Land ready Q4 2026 in a sought-after location

Footings + siteworks included - no hidden costs

(Not included: fencing, landscaping, rainwater tank, curtains/blinds and Aspire upgrades)