

# House and Land

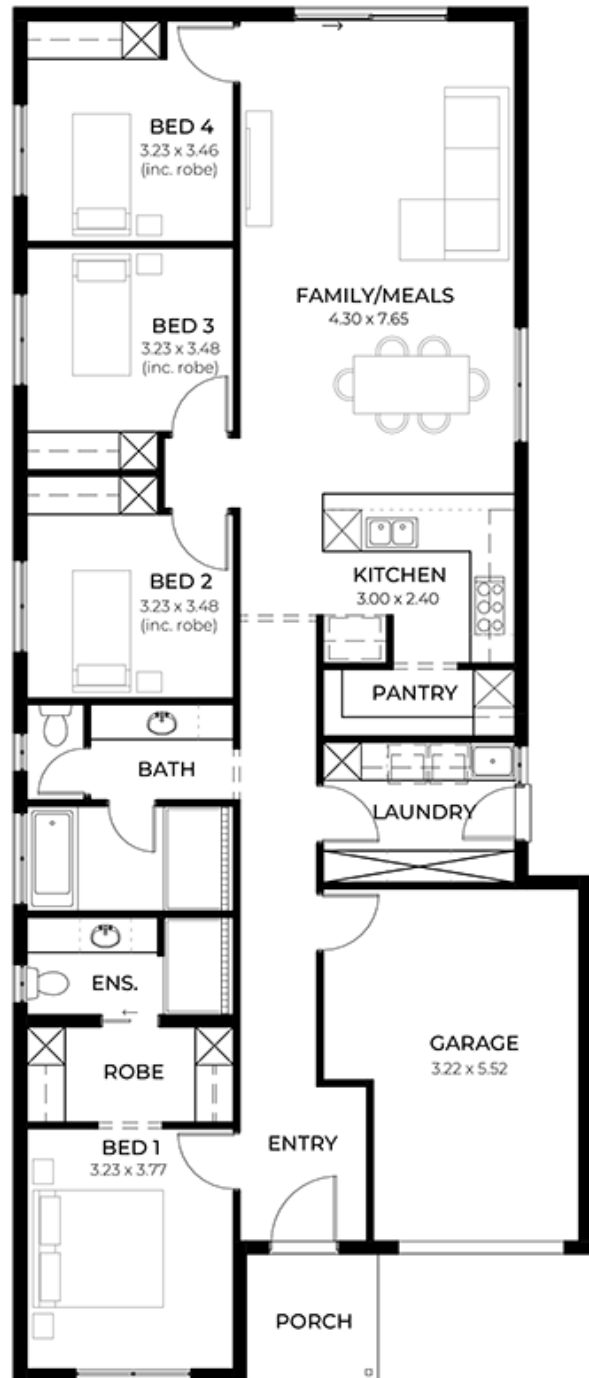
from **\$750,500\***

LOT 2001  
Frangipani Crescent  
Andrews Farm  
'Onyx 3.5 (V1.3)'

Lot Size 300.00m<sup>2</sup>  
Design Onyx 3.5 (V1.3)  
Block Size 300m<sup>2</sup>  
House Size 173m<sup>2</sup> / 18.62sq  
Width 9.00m



4 1 2 1



**SA** HOUSING  
CENTRE

**Leigh Raison 0497 704 675**

leighr@hickinbotham.com.au [sahousingcentre.com.au](http://sahousingcentre.com.au)

\* Terms and Condition's apply. For full details go to [sahousingcentre.com.au/terms-and-conditions/](http://sahousingcentre.com.au/terms-and-conditions/)



**Lucky you,  
all these  
impressive  
features are  
included with  
this home**

Ducted reverse cycle air-conditioning  
with Wi-Fi control

6.6kW solar system included

2.7m raised ceiling throughout

900mm Westinghouse appliances to  
kitchen including dishwasher

Flooring included (carpets to rooms,  
timber laminate to living)

Floor to ceiling tiling to bathroom and  
ensuite

Zenith surface benchtop to kitchen  
and pantry

Perimeter paving, driveway paving  
and storm water included

Shower ledges and soft closing  
joineries

Built-in robes with mirror finish,  
drawers and shelving set

30 weeks build time guarantee

3-month maintenance

25 year structural guarantee