

House and Land

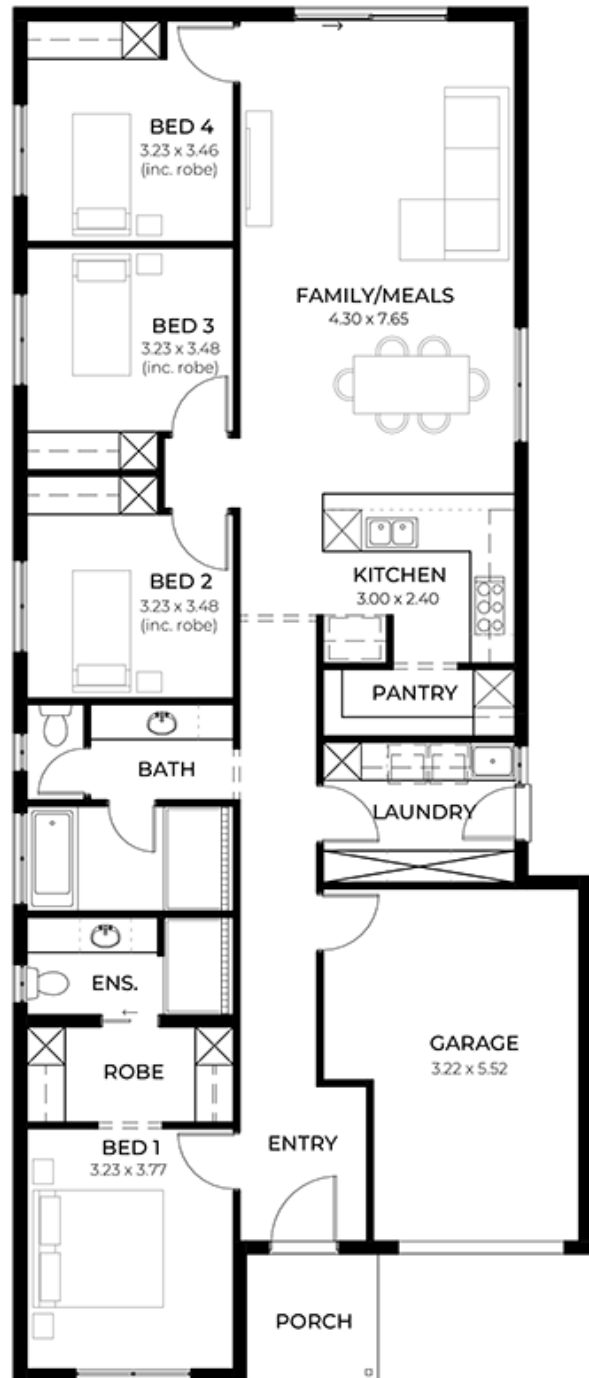
from **\$745,565***

LOT 508
Arcadia Way
Victor Harbor
'Onyx 3.5' (V1.3)

Lot Size 393.00m²
Design Onyx 3.5 (V1.3)
Block Size 393m²
House Size 173m² / 18.62sqgs
Width 9.00m



 4
  1
  2
  1



SA HOUSING CENTRE

Sandy Whitford 0480 486 561

sandyw@hickinbotham.com.au sahousingcentre.com.au

* Terms and Condition's apply. For full details go to sahousingcentre.com.au/terms-and-conditions/



**Lucky you,
all these
impressive
features are
included with
this home**

Secure your future home now - no surprises, we are the all-inclusive Builder

All-inclusive Building Package

30-week build time guarantee - from the time we can access the property and pour your slab, reliable turnaround

Premium Inclusions

Ducted reverse-cycle air conditioning with Wi-Fi control

6.6kW solar system - reduce your energy bills from day one

2700mm high ceilings throughout - create a spacious, airy feel

Driveway, perimeter path & stormwater system included

7 Star Energy Complaint

Designer Kitchen & Bathrooms

900mm stainless steel appliances + solid surface benchtops

Soft-close joinery throughout

Butler's pantry with solid surface benchtops

Semi-frameless shower screens, tiled ledges & premium tapware

Full wall tiling to bathrooms

Recessed kickers to vanities for sleek finish

Stylish Interiors

Timber-look floors to living areas; plush carpet to bedrooms & theatre

2340mm high internal doors + cavity sliders

Built-in robes with mirrored doors; WIR with shelving and drawers

Awning windows to living areas

Clipsal Iconic switches and ample Double Power points, TV & data points

Laundry, Storage & Garage

Overhead cupboards, pull-out bin, broom storage in laundry

Panel lift garage door with remote + rear roller door

Garage and alfresco insulation included

Outdoor Living & Finishes

Tiled verandah, alfresco & porch (where applicable to plan)

Gas BBQ point, garden taps & termite barrier

Colorbond roof with 25-degree pitch

Peace of mind, 3-month maintenance period & 25 year structural warranty