

House and Land

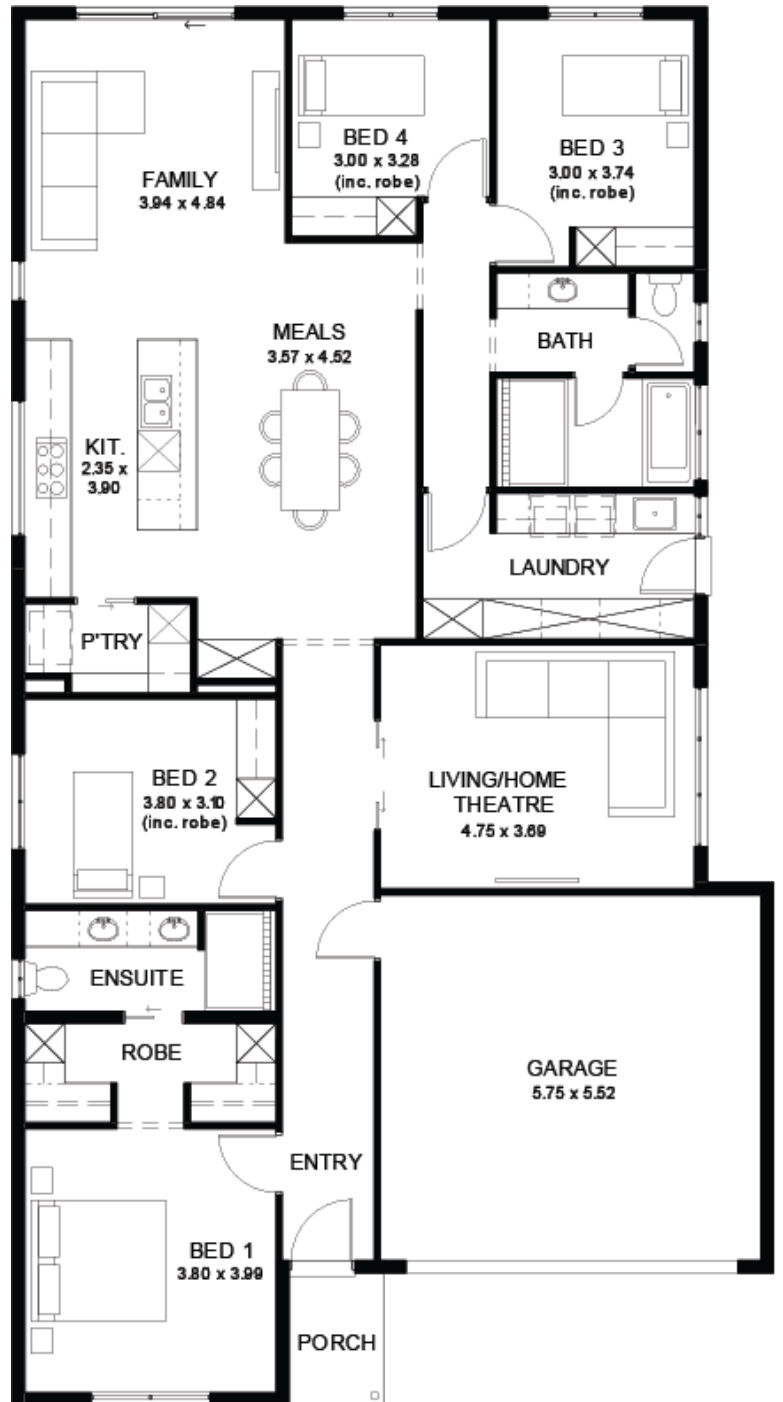
from **\$788,900***

LOT 1232
 Silvereye Court
 Riverlea Park
 'Turquoise 3.5' (V1.3)

Lot Size 420.00m²
 Design Turquoise 3.5 (V1.3)
 Block Size 420m²
 House Size 218m² / 23.47sqs
 Width 11.50m



4 2 2 2



Logan Kulas 0404 971 008

logank@hickinbotham.com.au sahousingcentre.com.au

* Terms and Condition's apply. For full details go to sahousingcentre.com.au/terms-and-conditions/



**Lucky you,
all these
impressive
features are
included with
this home**

30-week build time guarantee

Driveway, paths, flooring and stormwater all completed

Energy-efficient, build with Hebel construction, full insulation and 6.6kW solar to reduce ongoing costs

High-demand design with 2.7m ceilings, elevated roof pitch and oversized (2.3m) doors for a premium feel

Double garage with automatic panel lift door

Master suite designed for appeal - walk-in wardrobe flowing directly into private ensuite

Modern kitchen with zenyth stone benchtops, quality 900mm kitchen appliances and practical storage throughout

Fully equipped bathrooms and laundry with durable, low-maintenance finishes

Ducted reverse cycle air conditioning with Wi-Fi control for year-round comfort

Backed by a 25 year structural guarantee and a streamlined, reliable build process