

House and Land

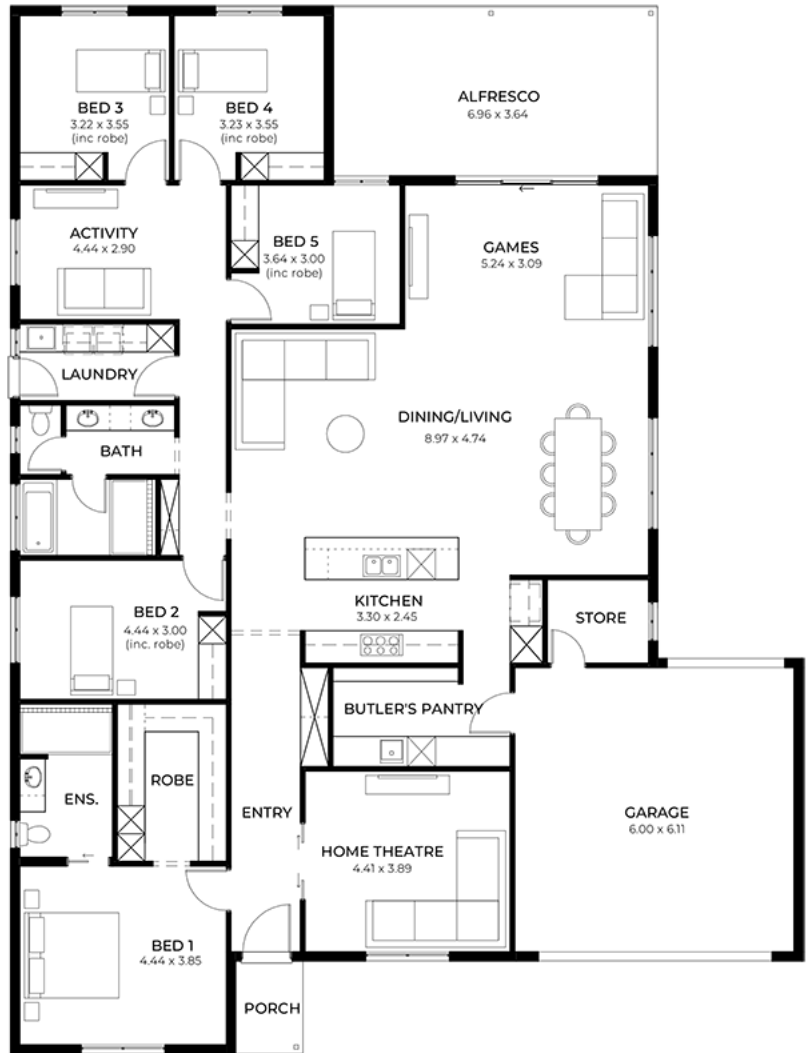
from
\$1,112,000*

LOT 1610
Woodman Drive
Cawler East
'Magenta 5.0' (V1.3)

Lot Size 960.00m²
Design Magenta 5.0 (V1.3)
Block Size 960m²
House Size 319m² / 34.35sq
Width 17.00m



5 3 2 2



SA HOUSING
CENTRE

Joanne Caruso 0447 631 130

joannec@sahousingcentre.com.au sahousingcentre.com.au

* Terms and Condition's apply. For full details go to sahousingcentre.com.au/terms-and-conditions/



**Lucky you,
all these
impressive
features are
included with
this home**

Located on popular Dress Circle

Everything Included from Quoting
Stage with Upfront Contracts

Simple 4 step process to lock in your
new home options

Fast 30 week construction with a well
established builder you can trust

Premium facades and Aspire upgrade
option available

Energy-smart Hebel home with solar
and premium roofing and insulation

Designer interiors: gourmet kitchen,
luxe bathrooms, high ceilings

Tech-ready living: Ring doorbell +
Wi-Fi AC

Turnkey finish with flooring, AC,
paving, stormwater + termite
protection

Footings + siteworks included - no
hidden costs

(Not included: fencing, landscaping,
rainwater tank, curtains/blinds and
Aspire upgrades)

Unlike anything youâ€™ll see
elsewhere, they include everything
you need, with two carefully curated
inclusion levels to choose from. No
surprises, no guesswork - just a
streamlined, stress-free building
experience designed with your vision
in mind