

# House and Land

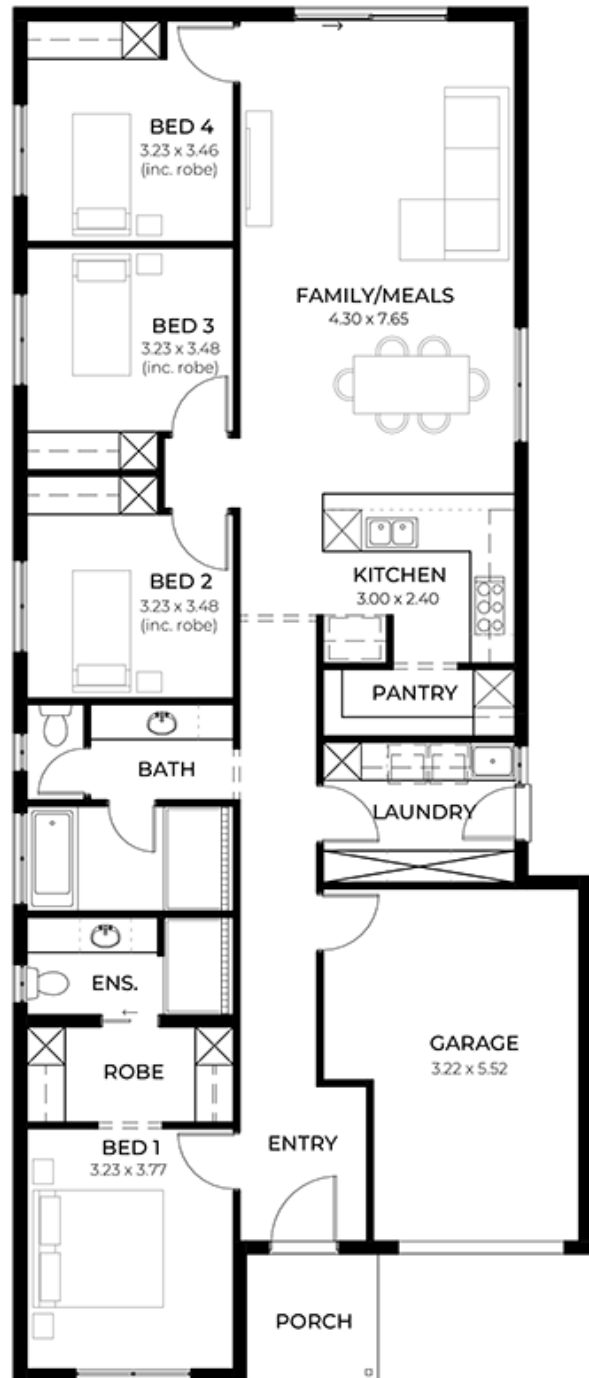
from **\$761,400\***

LOT 1237  
Spyridium Avenue  
Andrews Farm  
'Onyx 3.5 (V1.3)'

Lot Size 300.00m<sup>2</sup>  
Design Onyx 3.5 (V1.3)  
Block Size 300m<sup>2</sup>  
House Size 173m<sup>2</sup> / 18.62sqsq  
Width 9.00m



4 1 2 1



**SA** HOUSING CENTRE

**Angelique Pierce 0404 200 323**

angeliquep@hickinbotham.com.au [sahousingcentre.com.au](http://sahousingcentre.com.au)

\* Terms and Condition's apply. For full details go to [sahousingcentre.com.au/terms-and-conditions/](http://sahousingcentre.com.au/terms-and-conditions/)



**Lucky you,  
all these  
impressive  
features are  
included with  
this home**

Built in 30 weeks, whatâ€™s not to love!!

With over 95 standard inclusions, hereâ€™s a few we think youâ€™ll like:

2700mm ceilings with 2340mm high doors for an elevated look & feel

Large 900mm Westinghouse cooktop for those who love to cook or entertain

Stainless steel dishwasher

Ducted reverse-cycle air conditioning with Wi-Fi controller

Carpet to cosy areas and timber look flooring to main areas

Floor-to-ceiling tiles to bathroom and ensuite

Fully paved perimeter and driveway

6.6kW solar system

And so much more!!

What are you waiting for?

Enquire today, or meet me in person at the Andrews Farm Brookmont display