

# House and Land

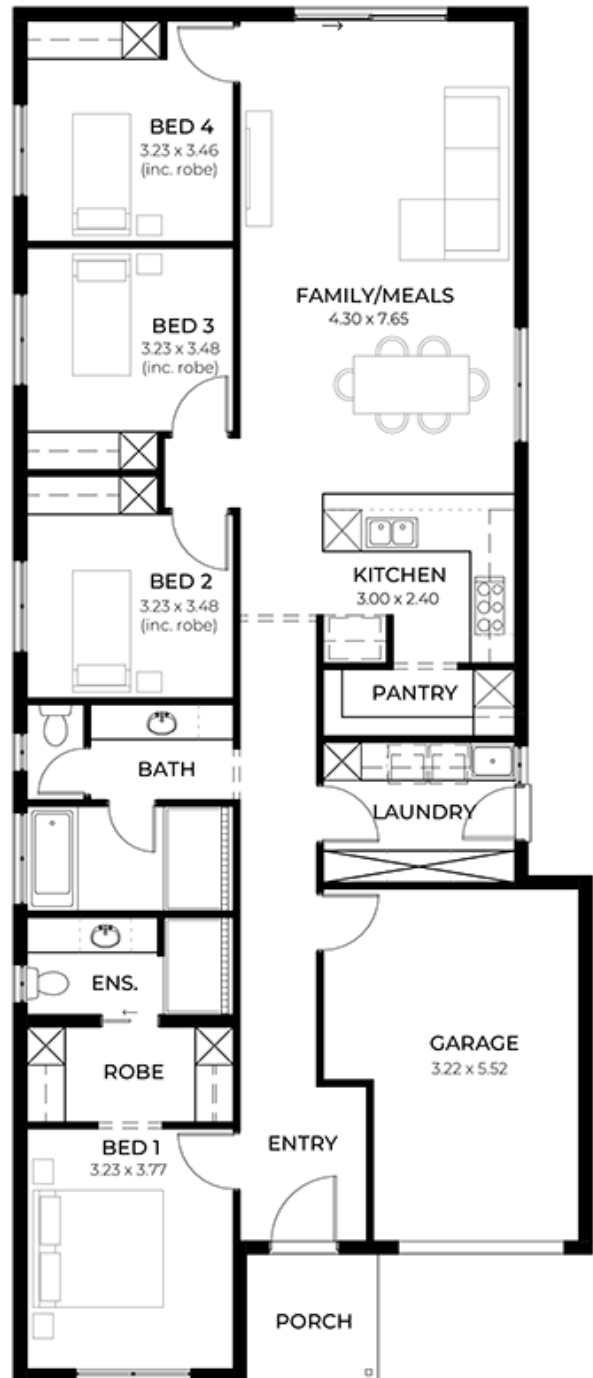
from **\$654,500\***

LOT 8176  
Cassowary Way  
Munno Para  
'Onyx 3.5 (V1.3)'

Lot Size 300.00m<sup>2</sup>  
Design Onyx 3.5 (V1.3)  
Block Size 300m<sup>2</sup>  
House Size 173m<sup>2</sup> / 18.62sqgs  
Width 9.00m



 4
  1
  2
  1



**SA** HOUSING CENTRE

**Rohit Khanna 0413 748 350**

rohitk@sahousingcentre.com.au [sahousingcentre.com.au](http://sahousingcentre.com.au)

\* Terms and Condition's apply. For full details go to [sahousingcentre.com.au/terms-and-conditions/](http://sahousingcentre.com.au/terms-and-conditions/)



**Lucky you,  
all these  
impressive  
features are  
included with  
this home**

#### Premium Turnkey Inclusions

Architecturally designed home - Crafted by a world-renowned architect for modern living and timeless street appeal

Designer interior styling - Curated colour schemes and finishes by a renowned interior designer

Complete flooring package - Timber laminate to main living areas with premium carpet to bedrooms

6.6kW solar system - Energy-efficient living with reduced electricity costs

Driveway & perimeter paving - Fully completed external paving for a polished, low-maintenance finish

Stormwater system included - Engineered drainage solution for long-term durability

20mm stone benchtops - Premium stone surfaces to kitchen and pantry

Ducted reverse cycle air conditioning - Zoned comfort throughout the home

Floor-to-ceiling tiles - Luxury tiling to bathrooms and ensuite

Site costs included - Comprehensive allowance for site preparation and works

Encumbrance requirements included - Designed to meet estate guidelines

High 2700mm ceilings - Enhancing space, light, and overall luxury feel

Premium kitchen appliances - 900mm oven, cooktop, rangehood & dishwasher

25 Year Structural Guarantee - Built with confidence and long-term assurance

Packed with additional quality features, smart design elements, and premium finishes throughout - this home offers exceptional value and lifestyle

Call now or book an appointment to explore available house & land packages