

House and Land

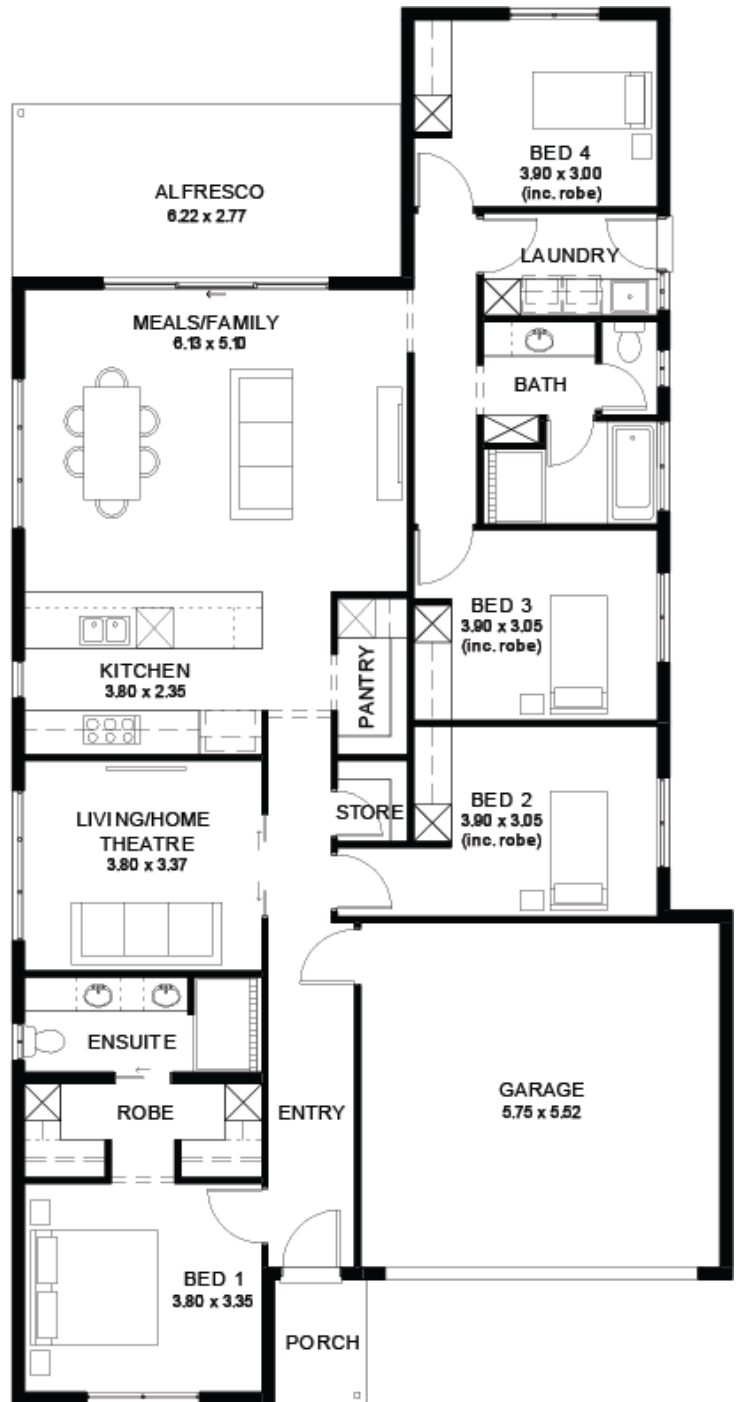
from **\$859,700***

LOT 39
Viewpoint Circuit
Craigmore
'Teal 3.5' (V1.3)

Lot Size 375.00m²
Design Teal 3.5 (V1.3)
Block Size 375m²
House Size 221m² / 23.82sq
Width 11.50m



4 2 2 2



SA HOUSING
CENTRE

Dallas Chivers 0405 808 434

dallasc@sahousingcentre.com.au sahousingcentre.com.au

* Terms and Condition's apply. For full details go to sahousingcentre.com.au/terms-and-conditions/



**Lucky you,
all these
impressive
features are
included with
this home**

****Titled July 26** Ready to Build****

Phone to book an Appointment

Genuine ALL INCLUSIVE pricing

5-Month Build Time (from foundation pour) - fast & efficient

Transparent & Comprehensive - no surprises, no hidden costs

Stress-Free Building Experience - streamlined from start to finish

Thoughtfully Designed Home - created to enhance everyday living

Choice of Premium Facades - elevate your street appeal

Upgrade Option to Aspire Inclusions - premium luxury at your fingertips

Hebel AAC External Walls - enhanced energy efficiency & acoustic comfort

Colorbond Roofing & 6.6kW Solar System â€” long-lasting and sustainable

Comprehensive Insulation - superior year-round climate control

Gourmet Kitchen - solid surface benchtops, soft-close cabinetry & premium appliances

Luxury Bathroom & Laundry - elegant fixtures & smart storage solutions

Stylish Interior Finishes - high ceilings (2340mm), modern detailing

Advanced Electrical Inclusions - Ring doorbell, Wi-Fi controlled air conditioning & more

Turnkey Finish - includes perimeter & driveway paving, stormwater & termite protection

Footings & Site Works Included

Price Valid for 14 Days - secure your package today

Phone and Appointment to bring your new home to life