

House and Land

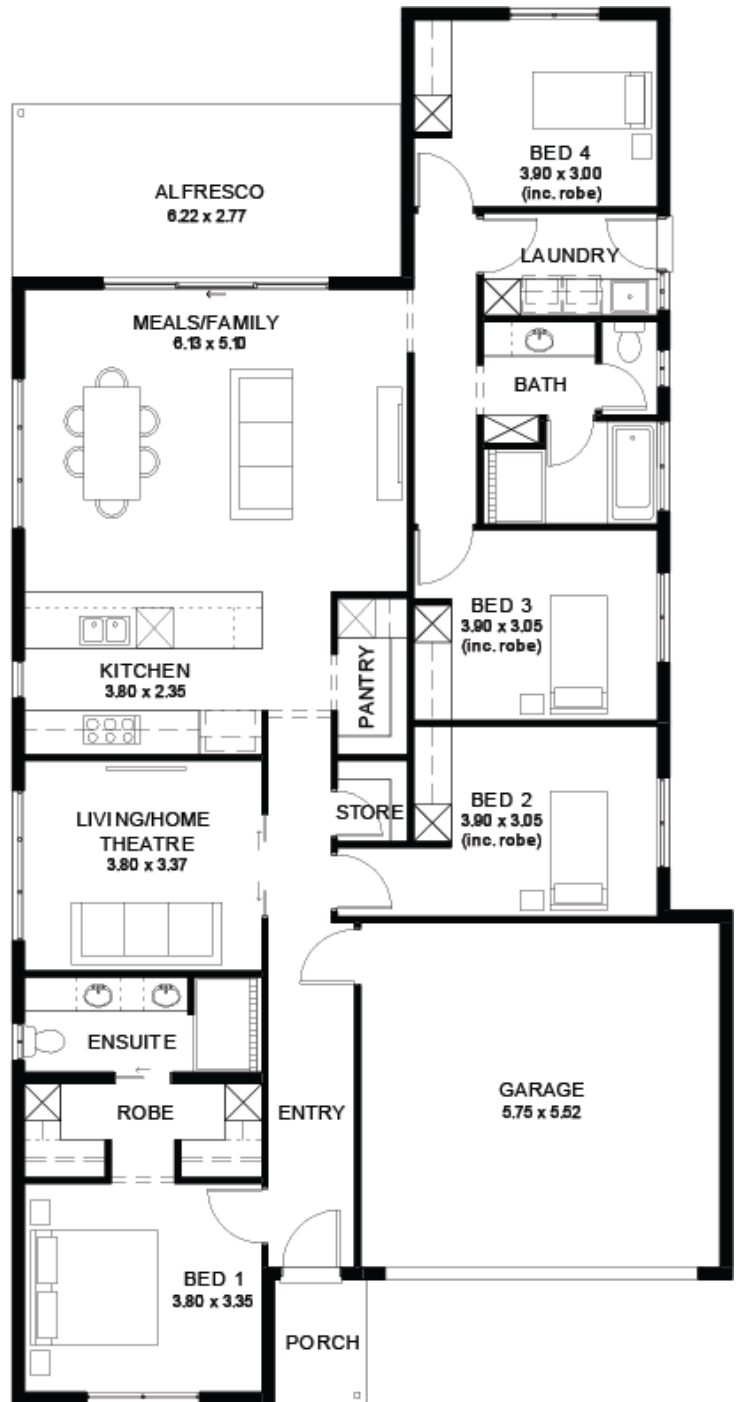
from **\$751,400***

LOT 3424
 Monash Avenue
 Riverlea Park
 'Teal 3.5' (V1.3)

Lot Size 420.00m²
 Design Teal 3.5 (V1.3)
 Block Size 420m²
 House Size 221m² / 23.82sqs
 Width 11.50m



 4
  2
  2
  2



SA HOUSING CENTRE

Angelique Pierce 0404 200 323

angeliquep@hickinbotham.com.au sahousingcentre.com.au

* Terms and Condition's apply. For full details go to sahousingcentre.com.au/terms-and-conditions/



**Lucky you,
all these
impressive
features are
included with
this home**

Built in 30 weeks, \$1k Deposit, what's not to love!!

With over 95 standard inclusions, here's a few we think you'll like:

Reverse cycle airconditioning - zoned

6.6kW Solar

All carpet and flooring

Floor-to-ceiling tiles in wet areas

Driveway paved

Perimeter path paving

Alfresco tiled

Ceiling fan provision to alfresco

External power points

External gas BBQ point

Garden taps, front x1, back x2

Porch tiled

External downlight to front porch

Wall stops to internal doors

TV points

Double power points throughout

900mm Appliances

Stainless steel dishwasher

Under bench microwave provision with pot draw

2.7m High Ceilings

2.3m High Doors

Door bell with chime

What are you waiting for? Enquire today to take the first step towards your home ownership dream

Get in touch today or visit me in person at the Brookmont display in Andrews Farm