

House and Land

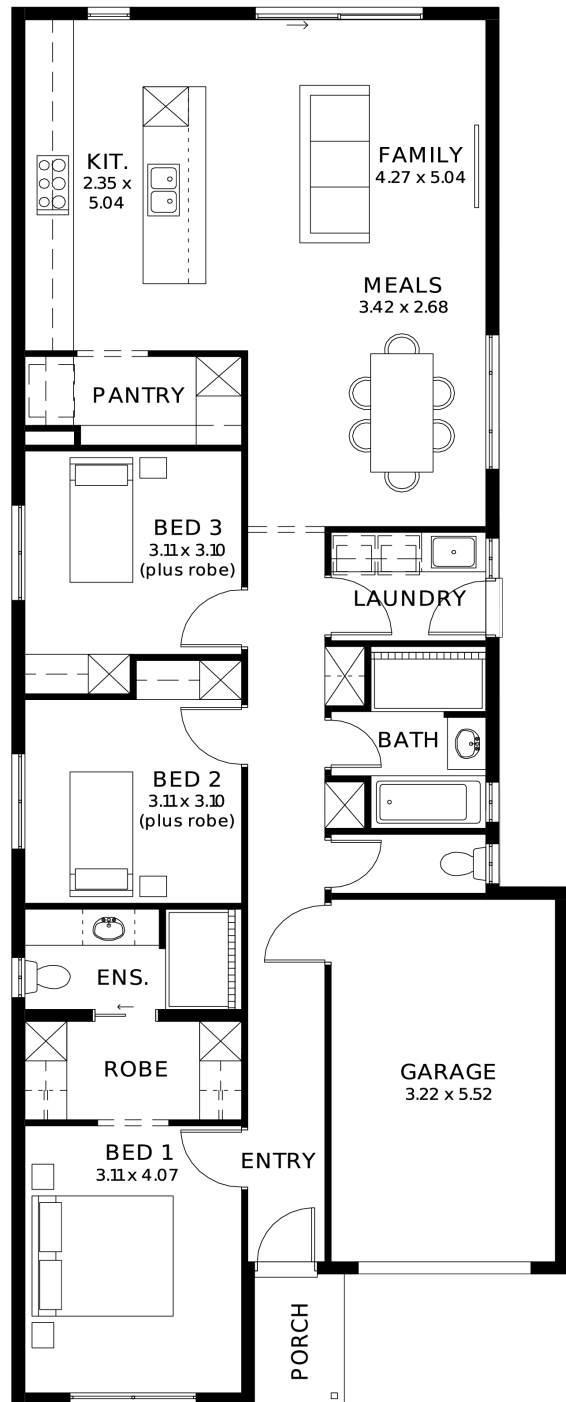
from **\$648,600***

LOT 511
Chillingworth Court
Encounter Bay
'Ivory 3.5' (V1.3)

Lot Size 270.00m²
Design Ivory 3.5 (V1.3)
Block Size 270m²
House Size 150m² / 16.21sq
Width 8.00m



3 1 2 1



SA HOUSING CENTRE

Samy Syed 0456 296 665

samysy@hickinbotham.com.au sahousingcentre.com.au

* Terms and Condition's apply. For full details go to sahousingcentre.com.au/terms-and-conditions/



**Lucky you,
all these
impressive
features are
included with
this home**

BUILD WITH CONFIDENCE! Attention First Home Buyers & Families! Prime Location with open reserves & close to sea side. Make every day FUN!

30 WEEKS FAST TRACK BUILD GURANTEE with everything included! Packed with Premium designer color schemes & **SERIOUS** inclusions:

Driveway & perimeter path paving/storm water

6.6kw solar system

Door bell with chime

High-grade insulation to house

Garage with auto panel lift door

2700mm High ceiling with 2340mm high doors

Attractive house facade (as per estate encumbrance)

Ducted reverse cycle air conditioning with Wi-Fi controller

Premium soft closing joinery throughout

20mm Premium Zenith stone benches & 900mm Westinghouse appliances/dishwasher

Full-height wall tilings to wet areas with shower ledges & floating vanities

High-grade timber laminate & carpet

Double power points throughout with multiple TV points

High-grade insulation to ceiling & internal/external walls

**Land is subject to availability