

House and Land

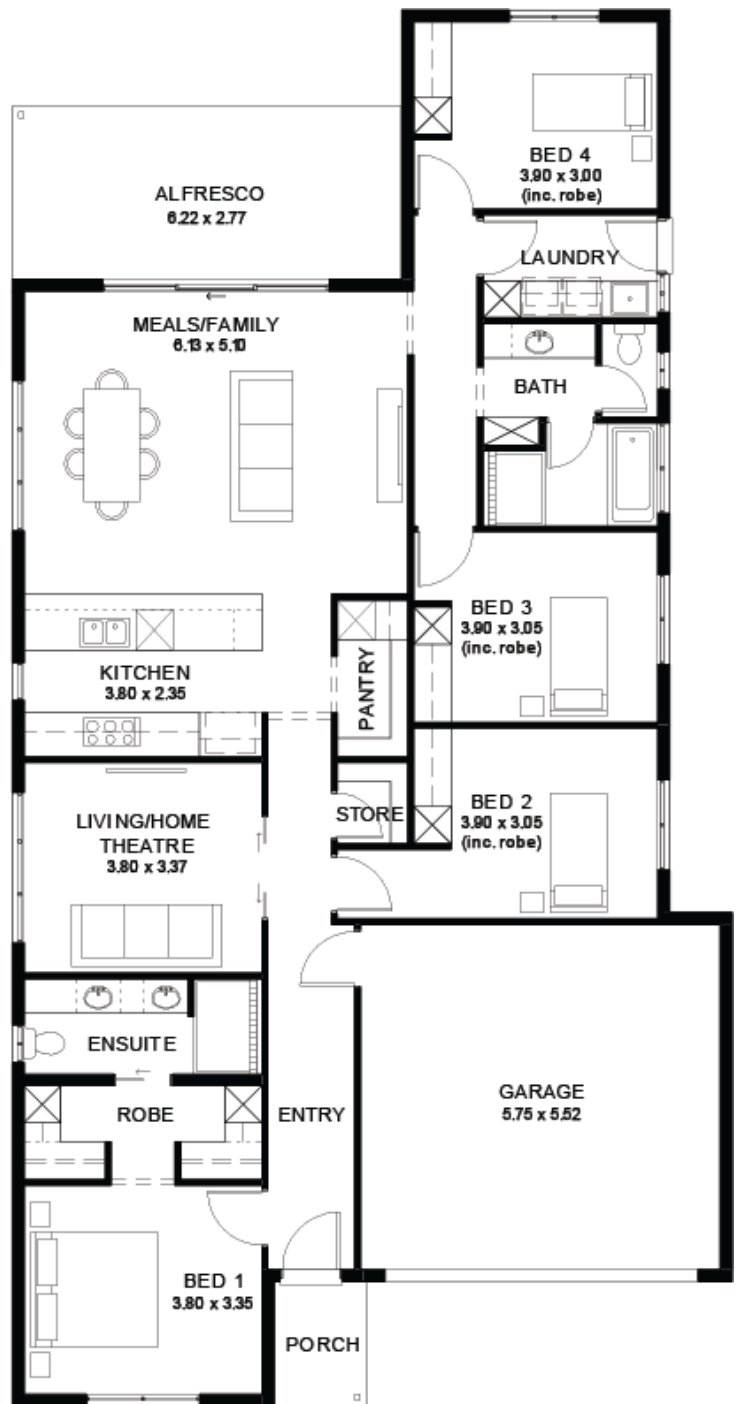
from **\$862,700***

LOT 1126
Scholz Way
Evanston Gardens
'Teal 3.5' (V1.3)

Lot Size 591.00m²
Design Teal 3.5 (V1.3)
Block Size 591m²
House Size 221m² / 23.82sqs
Width 11.50m



4 2 2 2



SA HOUSING CENTRE

Rick Chen 0434 619 975

rick@sahousingcentre.com.au sahousingcentre.com.au

* Terms and Condition's apply. For full details go to sahousingcentre.com.au/terms-and-conditions/



**Lucky you,
all these
impressive
features are
included with
this home**

Footings and site works

6.6kW solar system included

External driveway and pathway with pavers, and stormwater disposal

2.7m ceiling throughout / 25-degree roof pitch / 450mm eaves

2.3m high doors (external and Internal)

Insulation throughout including R6.0 to ceiling

900mm Westinghouse appliances to kitchen including dishwasher

Full height tiling to bathrooms

Solid surface benchtop to kitchen and pantry

Double power points throughout

Built-in robes with a mirror slider, drawers and shelving sets

Tiled ledge to showers with 1.95m high Milan semi-framed shower screens

45 litre inset trough to laundry with floor units and tiling behind

400mm deep overhead cupboards to kitchen and laundry

Auto single span panel to garage

Premium facade as selected or your choice, including slab and tiles

Slab and tiles to alfresco as per plan

Flooring included (carpets to rooms / timber laminate to living, kitchen)

Ducted reverse cycle air-conditioning with Wi-Fi control

Fast pre-construction process

3-month maintenance

25 Year Structural Guarantee