

House and Land

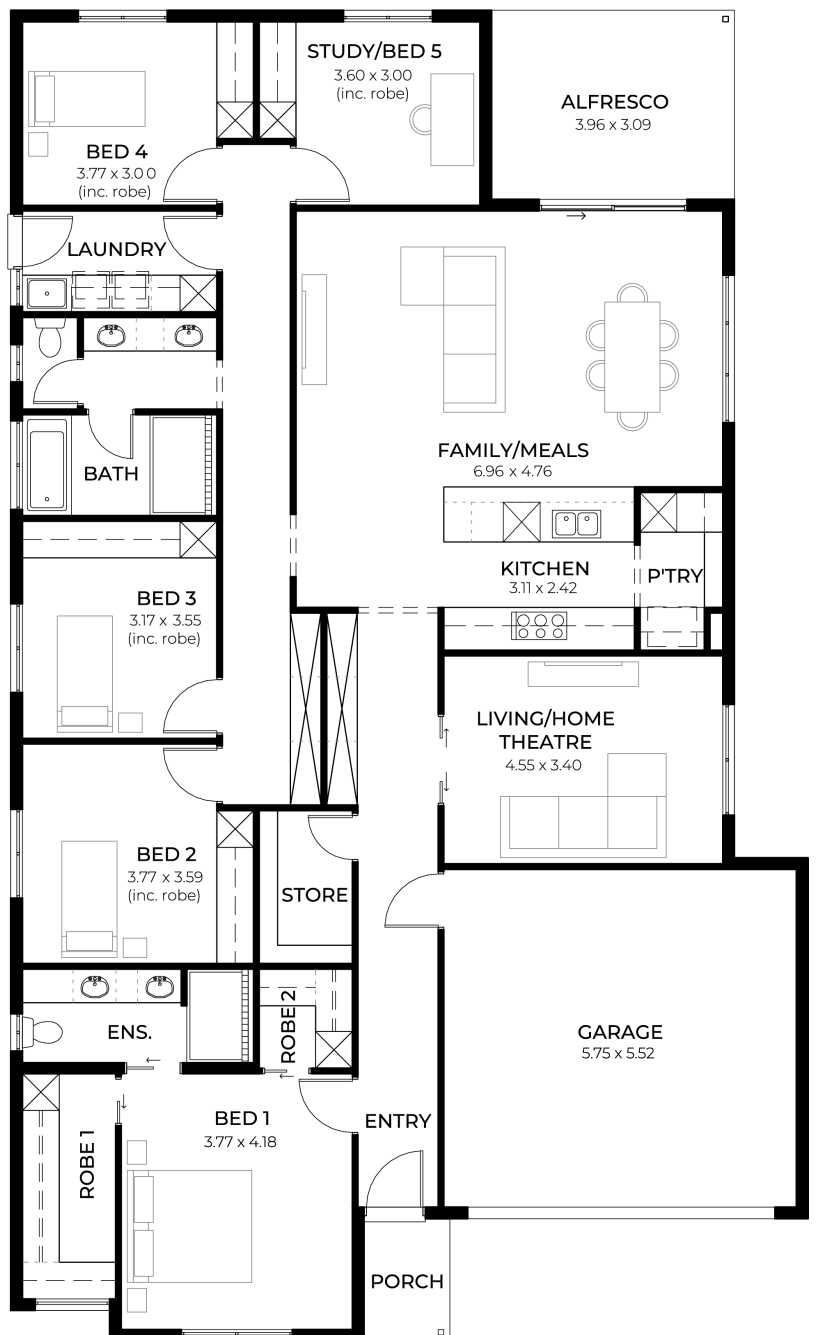
from **\$876,700***

LOT 1247
Raven Way
Riverlea Park
'Ochre 3.5' (V1.1)

Lot Size 480.00m²
Design Ochre 3.5 (V1.1)
Block Size 480m²
House Size 234m² / 25.21sqs
Width 13.00m
Depth 21.00m



 4
  2
  2
  2



SA HOUSING CENTRE

Shannon O'Brien 0434 777 029

shannono@hickinbotham.com.au sahousingcentre.com.au

* Terms and Condition's apply. For full details go to sahousingcentre.com.au/terms-and-conditions/



**Lucky you,
all these
impressive
features are
included with
this home**

Contemporary home design with modern facade and carefully curated street appeal in line with estate requirements

Elevated 2700mm high ceilings complemented by 2340mm high internal doors creating a light, open feel

Functional kitchen with premium 900mm appliances, stone benchtops & soft-close cabinetry

Walk-in pantry with ample storage

Spacious master bedroom with ensuite and walk-in robe; built-in mirrored robes to additional bedrooms

Ducted & zoned reverse cycle air conditioning with smart Wi-Fi control for ultimate year-round comfort

6.6kW solar system to support energy efficiency

High-end flooring throughout, with plush carpets to bedrooms and timber-look flooring to living areas

Stylish bathrooms with full-height tiling, tiled niches, quality fittings and semi-frameless shower screens

Double garage with automatic panel lift door

Paved driveway, perimeter paving, stormwater and termite protection included

Site works and encumbrance requirements included for a seamless building process

30 week build time guarantee

3-month maintenance period and 25 year structural warranty for peace of mind