

# House and Land

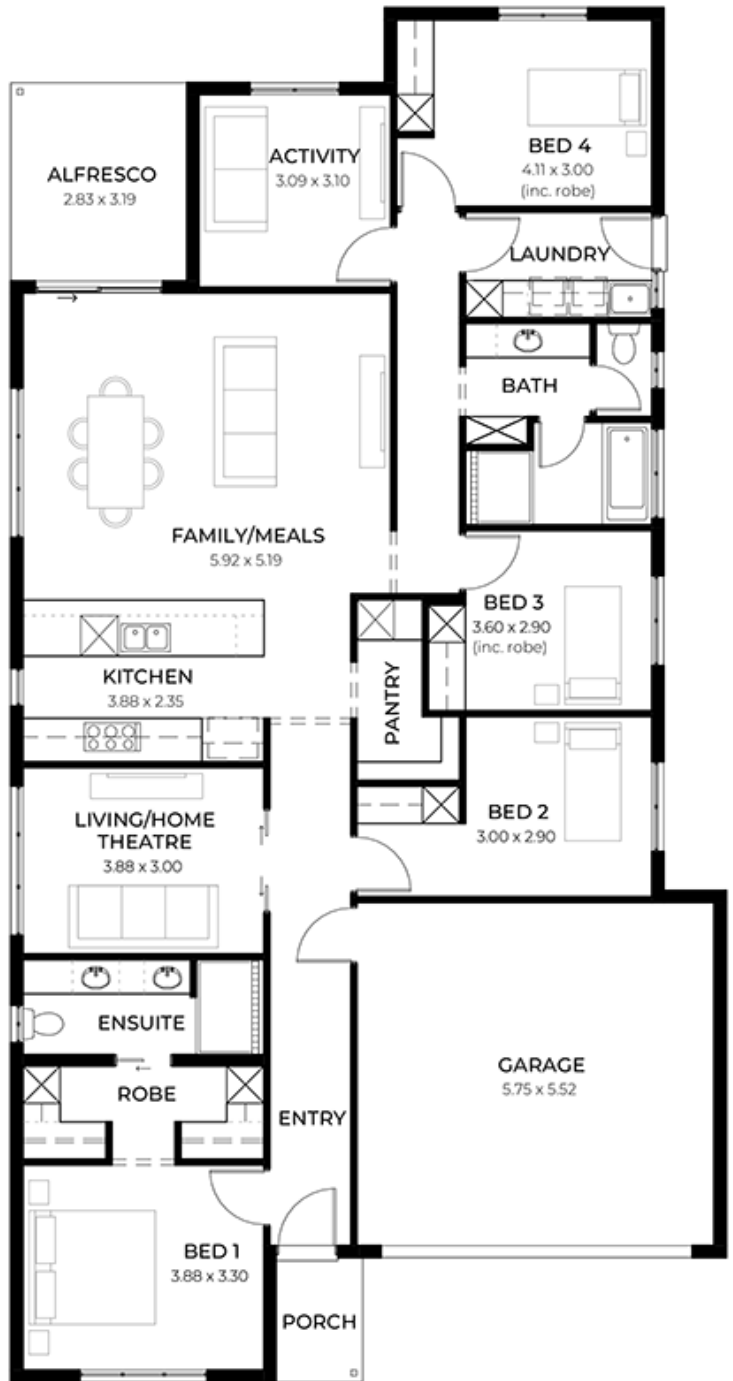
from **\$787,900\***

LOT 1003  
 Pixmore Avenue  
 Cawler Belt  
 'Burgundy 3.5' (V1.3)'

Lot Size 375.00m<sup>2</sup>  
 Design Burgundy 3.5 (V1.3)  
 Block Size 375m<sup>2</sup>  
 House Size 220m<sup>2</sup> / 23.78sqs  
 Width 11.50m



 4
  3
  2
  2





**Lucky you,  
all these  
impressive  
features are  
included with  
this home**

Fixed 30 week build time

Please note: A variety of block sizes and designs are available upon request

All footings & encumbrance requirements included

2700mm ceilings & 2340mm internal doors

Kitchen with 900mm appliances, stone benchtops & soft-close cabinetry

Floor-to-ceiling tiling to bathrooms

Timber flooring to living, carpet to bedrooms (Creditable)

Ducted reverse-cycle air conditioning (Wi-Fi)

6.6kW solar system

Full insulation throughout

Colorbond roof & panel-lift garage door

Tiled alfresco, porch & verandah

Driveway, perimeter paths & stormwater included (Creditable)

Fully furnished robes & fitted laundry

Clipsal Iconic switches, TV/data points & power throughout

Gas BBQ point, garden taps & termite barrier

3 month maintenance period + 25m Year Structural Warranty