

# House and Land

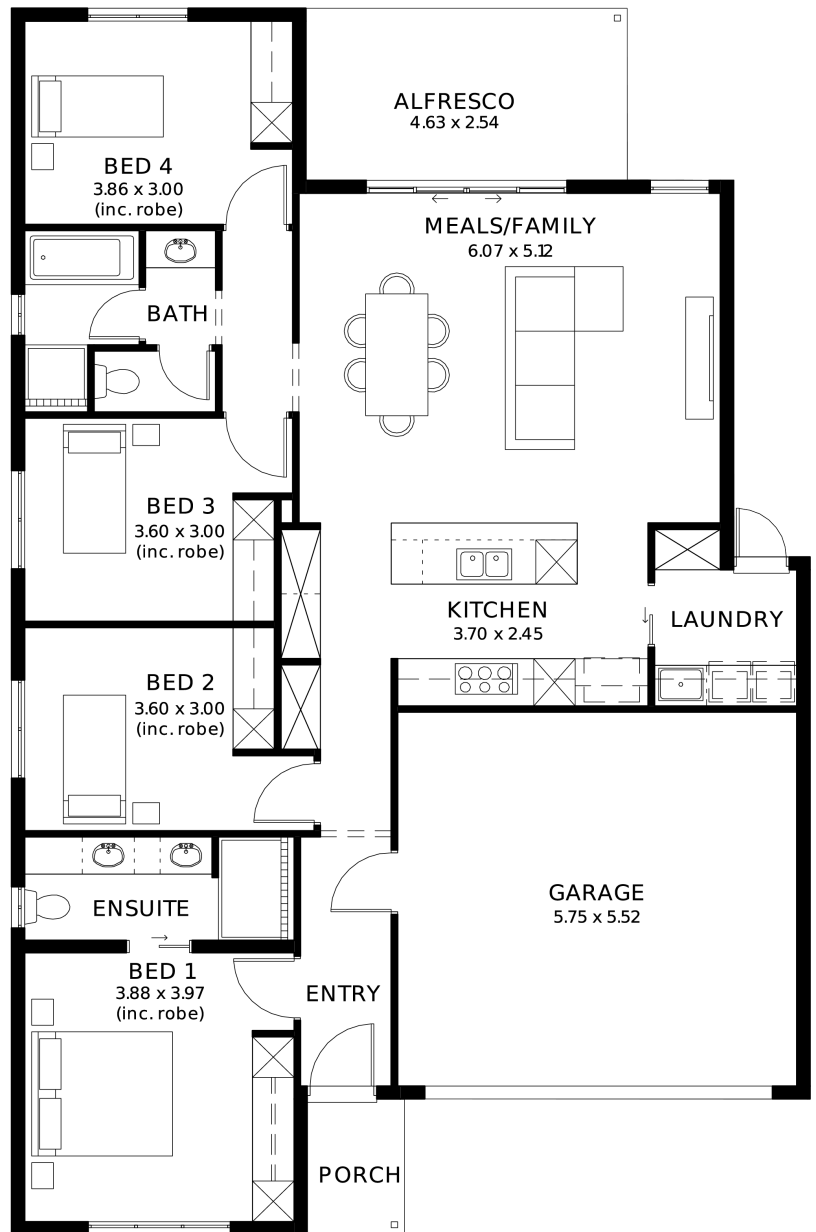
from  
**\$824,700\***

LOT 83  
Radiant Way  
Angle Vale  
'Cobalt 3.5' (V1.3)

Lot Size 388.00m<sup>2</sup>  
Design Cobalt 3.5 (V1.3)  
Block Size 388m<sup>2</sup>  
House Size 183m<sup>2</sup> / 19.77sq  
Width 11.50m



 4  1  2  2



**SA** HOUSING  
CENTRE

**Logan Kulas 0404 971 008**

logank@hickinbotham.com.au [sahousingcentre.com.au](http://sahousingcentre.com.au)

\* Terms and Condition's apply. For full details go to [sahousingcentre.com.au/terms-and-conditions/](http://sahousingcentre.com.au/terms-and-conditions/)



**Lucky you,  
all these  
impressive  
features are  
included with  
this home**

Clever 4-bedroom design ideal for low-maintenance living

Designer kitchen with Zenyth stone benchtops and 900mm appliances

Private main suite with ensuite

Built-in robes to remaining bedrooms

Open-plan living and dining designed for everyday comfort

2.7m high ceilings & 25-degree roof pitch

2340mm high internal & external doors throughout

Ducted reverse cycle air conditioning with Wi-Fi control

Complete flooring package - timber laminate & carpet throughout

6.6kW solar system for long-term efficiency

Alfresco included

Driveway, paths, stormwater & essential external works included

30 week build time guarantee for added certainty and confidence

Streamlined, no-selection build process for a faster, more reliable build