

# House and Land

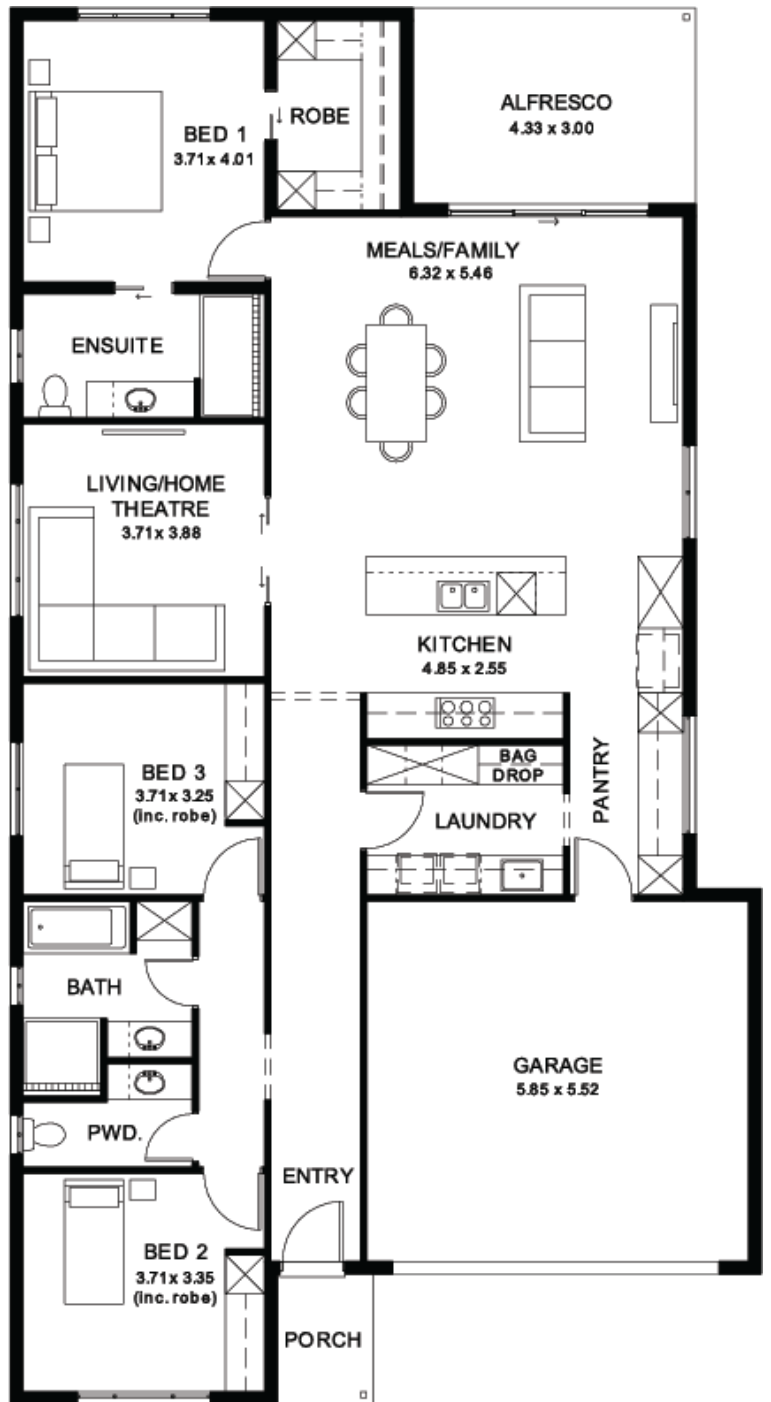
from **\$823,200\***

LOT 1234  
 Spyridium Avenue  
 Andrews Farm  
 'Tangerine 3.5' (V1.4)

Lot Size 375.00m<sup>2</sup>  
 Elevation  
 Design Tangerine 3.5 (V1.4)  
 Block Size 375m<sup>2</sup>  
 House Size 220m<sup>2</sup> / 23.75sq  
 Width 11.50m



 3
  2
  2
  2



**Josh Hansford 0433 445 750**

joshh@sahousingcentre.com.au [sahousingcentre.com.au](http://sahousingcentre.com.au)

\* Terms and Condition's apply. For full details go to [sahousingcentre.com.au/terms-and-conditions/](http://sahousingcentre.com.au/terms-and-conditions/)





**Lucky you,  
all these  
impressive  
features are  
included with  
this home**

30-week build time guarantee

Ducted reverse-cycle air conditioning  
with Wi-Fi controller

6.6kW solar system

2700mm high ceilings throughout

All Footings/Site costs and  
encumbrance compliance

900mm Westinghouse oven & gas  
cooktop

Soft-close joinery throughout

Butler's pantry with Zenith surface  
benchtops

Semi-frameless shower screens &  
premium tapware

Full wall tiling to bathrooms

Recessed kickers to vanities

Timber laminate floors to living areas;  
carpet to bedrooms & theatre

2340mm high internal doors + cavity  
sliders

Built-in robes with mirrored doors; WIR  
with shelving and drawers in Bed 1

Clipsal Iconic switches and ample  
Double Power points, TV & data points

Overhead cupboards, pull-out bin,  
broom storage in laundry

Panel lift garage door with remote  
control unit

Internal wall, External wall, Garage  
and alfresco ceiling insulation

Tiled verandah, alfresco & porch  
(where applicable to plan)

Colorbond roof with 25-degree pitch

3-month warranty period

25 Year Structural Guarantee