

House and Land

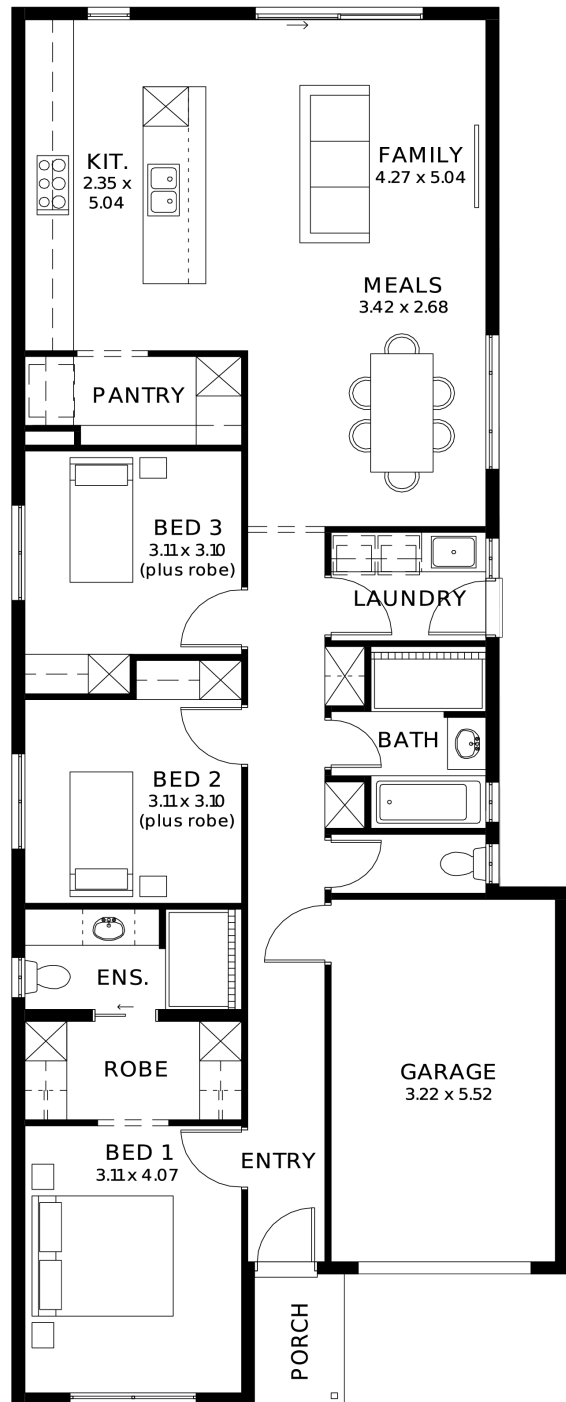
from **\$652,900***

LOT 505
 Arcadia Way
 Encounter Bay
 'Ivory 3.5' (V1.3)

Lot Size 270.00m²
 Design Ivory 3.5 (V1.3)
 Block Size 270m²
 House Size 150m² / 16.21sq
 Width 8.00m



3 1 2 1



Rohit Khanna 0413 748 350

rohitk@sahousingcentre.com.au sahousingcentre.com.au

* Terms and Condition's apply. For full details go to sahousingcentre.com.au/terms-and-conditions/



**Lucky you,
all these
impressive
features are
included with
this home**

Seascape Living!

Premium Turnkey Inclusions

Architecturally Designed Home - Crafted by a world-renowned architect for modern living and timeless street appeal

Designer Interior Styling - Curated colour schemes and finishes by a renowned interior designer

Complete Flooring Package - Timber laminate to main living areas with premium carpet to bedrooms

6.6kW Solar System - Energy-efficient living with reduced electricity costs

Driveway & Perimeter Paving - Fully completed external paving for a polished, low-maintenance finish

Stormwater System Included - Engineered drainage solution for long-term durability

20mm Stone Benchtops - Premium stone surfaces to kitchen and pantry

Ducted Reverse Cycle Air Conditioning - Zoned comfort throughout the home

Floor-to-Ceiling Tiles - Luxury tiling to bathrooms and ensuite

Site Costs Included - Comprehensive allowance for site preparation and works

Encumbrance Requirements Included - Designed to meet estate guidelines

High 2700mm Ceilings - Enhancing space, light, and overall luxury feel

Premium Kitchen Appliances - 900mm oven, cooktop, rangehood & dishwasher

25 Year Structural Guarantee - Built with confidence and long-term assurance

Packed with additional quality features, smart design elements, and premium finishes throughout - this home offers exceptional value and lifestyle

Call now or book an appointment to explore available house & land packages