

House and Land

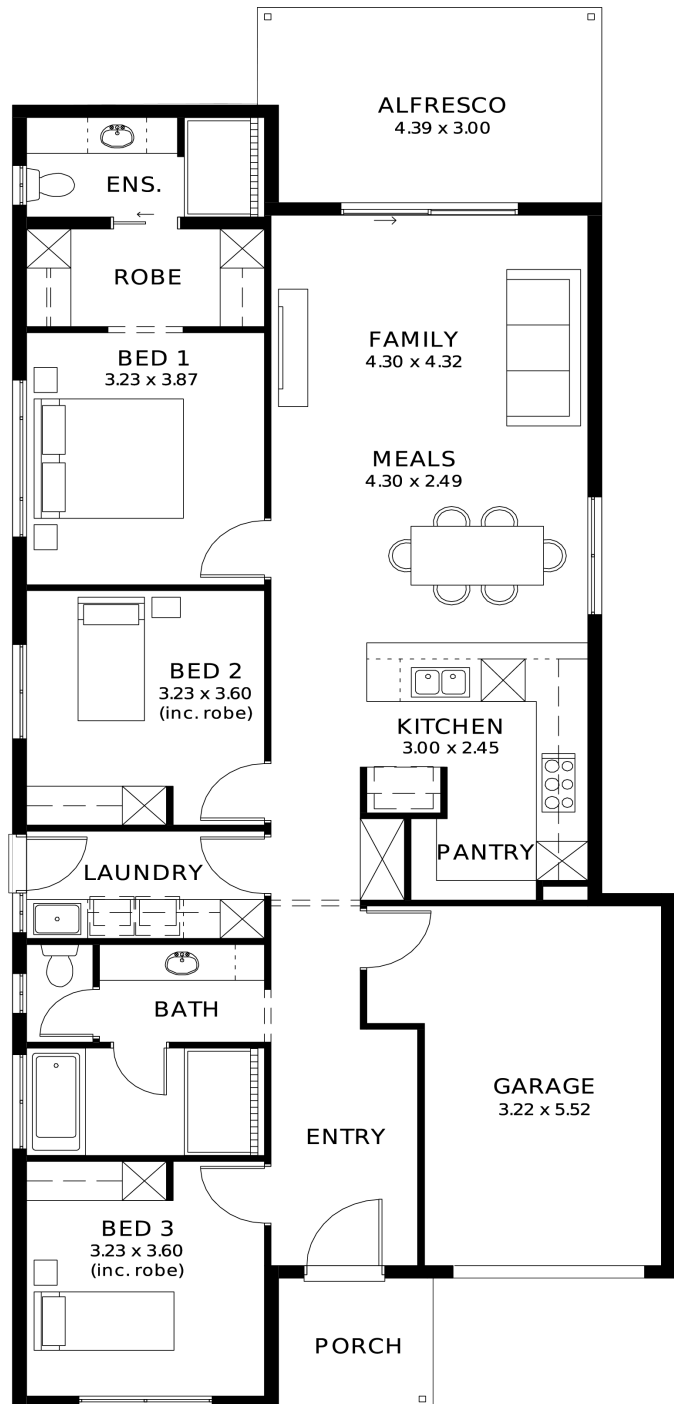
from **\$756,100***

LOT 63
Marquise Place
Angle Vale
'Pewter 3.5 (V1.4)'

Lot Size 310.00m²
Design Pewter 3.5 (V1.4)
Block Size 310m²
House Size 168m² / 18.12sq
Width 9.00m



3 1 2 1



SA HOUSING CENTRE

Joanne Kountourogiannis 0432 041 447

joanneko@sahousingcentre.com.au sahousingcentre.com.au

* Terms and Condition's apply. For full details go to sahousingcentre.com.au/terms-and-conditions/



**Lucky you,
all these
impressive
features are
included with
this home**

Land titled September 2026

This will sell fast!!

Driveway and perimeter paving

Stormwater

Footings included

Garage with remote control units to
panel lift door

2700mm ceilings with high doors

Ensuite to Bed 1

Full-height tiling to Bathrooms

900mm cooktop, oven and rangehood

Stone benchtop to Kitchen

6.6kW Solar

Built-in robes to Bedrooms

Plenty of built-in storage

Carpet to Bedrooms

Timber flooring to remainder

Tiled wet areas

Ducted and zoned reverse cycle AC

Colorbond facias and gutters

Overhead cupboards to kitchen

Instantaneous gas hot water

Keylocks to windows

Smoke detectors