

House and Land

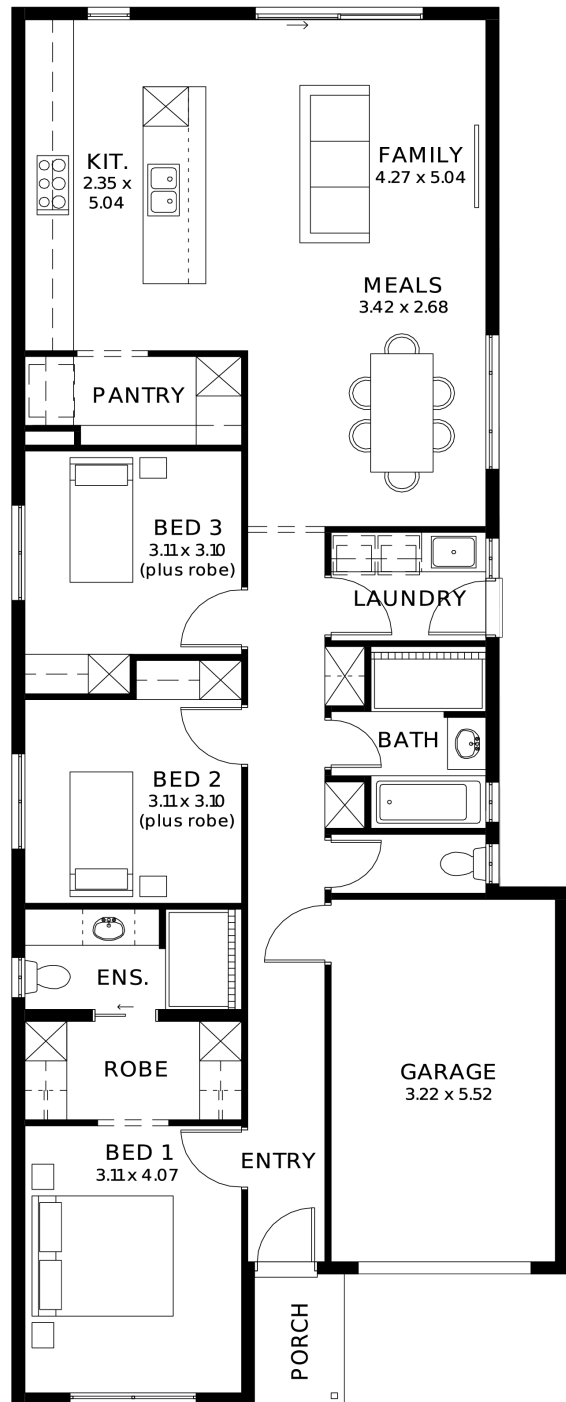
from **\$719,900***

LOT 3409
 Florence Street
 Angle Vale
 'Ivory 3.5' ^(V1.3)

Lot Size 288.00m²
 Design Ivory 3.5 ^(V1.3)
 Block Size 288m²
 House Size 150m² / 16.21sqm
 Width 8.00m



3 1 2 1





**Lucky you,
all these
impressive
features are
included with
this home**

Built in 30 weeks, \$1k Deposit, what's not to love!!

With over 95 standard inclusions, here's a few we think you'll like:

Reverse cycle air conditioning - zoned

6.6kW solar

All carpet and flooring

Floor to ceiling tiles in wet areas

Driveway paved

Perimeter path paving

Alfresco tiled

Ceiling fan provision to alfresco

External power points

External gas BBQ point

Garden taps, front x1, back x2

External downlight to front porch

Wall stops to internal doors

TV points

Double power points throughout

900mm appliances

Stainless steel dishwasher

Under bench microwave provision with pot draw

2.7m High Ceilings

2.3m High Doors

Door bell with chime

What are you waiting for? Enquire today to take the first step towards your home ownership dream

Get in touch today or visit me in person at the Brookmont display in Andrews Farm