

# House and Land

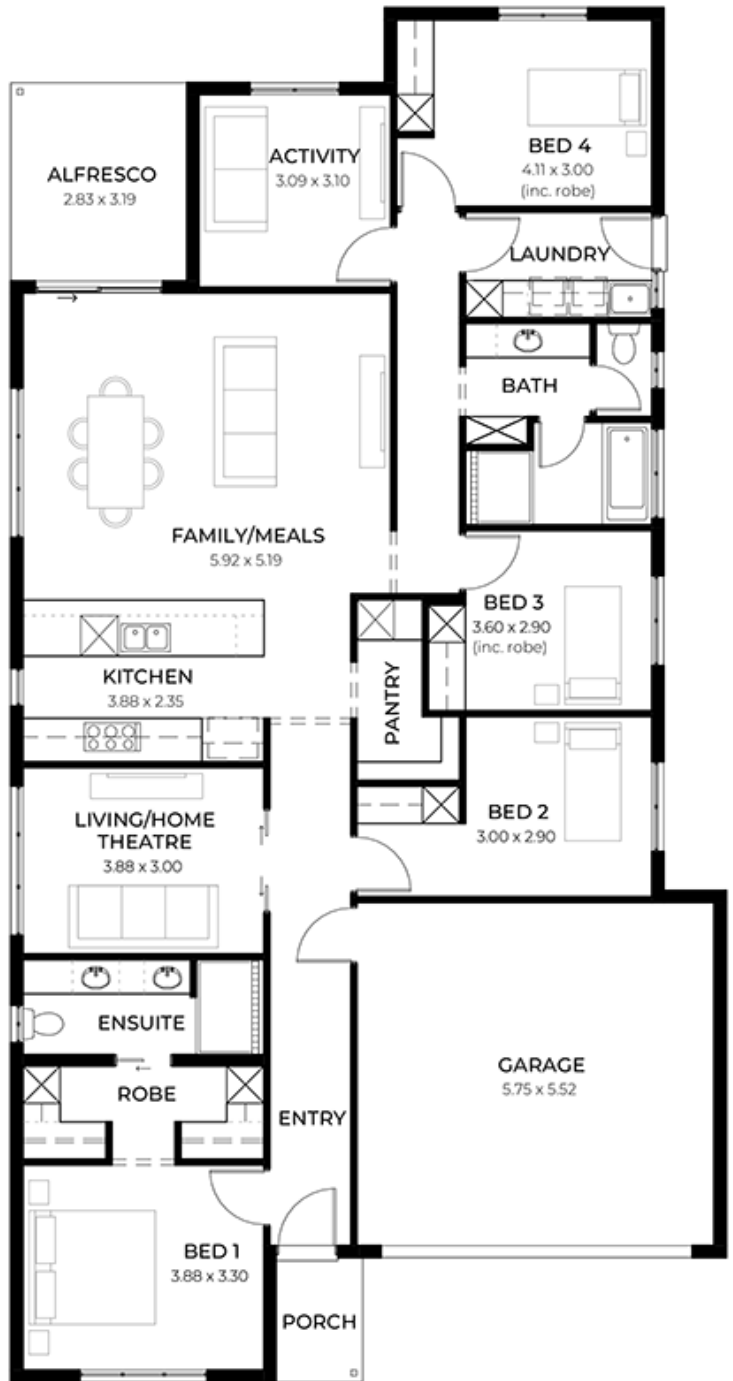
from **\$777,800\***

LOT 1552  
Victoria Drive  
Riverlea Park  
'Burgundy 3.5' (V1.3)

Lot Size 375.00m<sup>2</sup>  
Design Burgundy 3.5 (V1.3)  
Block Size 375m<sup>2</sup>  
House Size 220m<sup>2</sup> / 23.78sq  
Width 11.50m



4 3 2 2



**SA** HOUSING CENTRE

**Dinesh Koggala 0422 245 894**

dineshk@hickinbotham.com.au [sahousingcentre.com.au](http://sahousingcentre.com.au)

\* Terms and Condition's apply. For full details go to [sahousingcentre.com.au/terms-and-conditions/](http://sahousingcentre.com.au/terms-and-conditions/)



**Lucky you,  
all these  
impressive  
features are  
included with  
this home**

Modern Design, Unbeatable Location

A smart move for first home buyers Or  
Investors!!

30 Week Build Time Guarantee

Upgraded facade

Garage with remote control units to  
panel lift door

2700mm ceilings with high doors

Ensuite to Bed 1

900mm Cooktop, oven, and  
rangehood

Stone benchtop to Kitchen

6.6kW Solar

Built-in robes to Bedrooms

Plenty of built-in storage

Carpet to Bedrooms

Timber flooring to remainder

Tiled wet areas

Ducted and zoned reverse cycle AC

Colorbond facias and gutters

Overhead cupboards to Kitchen

Instantaneous gas hot water

Keylocks to windows

Smoke detectors

Footing price and encumbrance  
requirements included

3 Month Maintenance Period + 25  
Year Structural Warranty

This is more than a house - it's your  
next chapter

Let's talk today!??