

House and Land

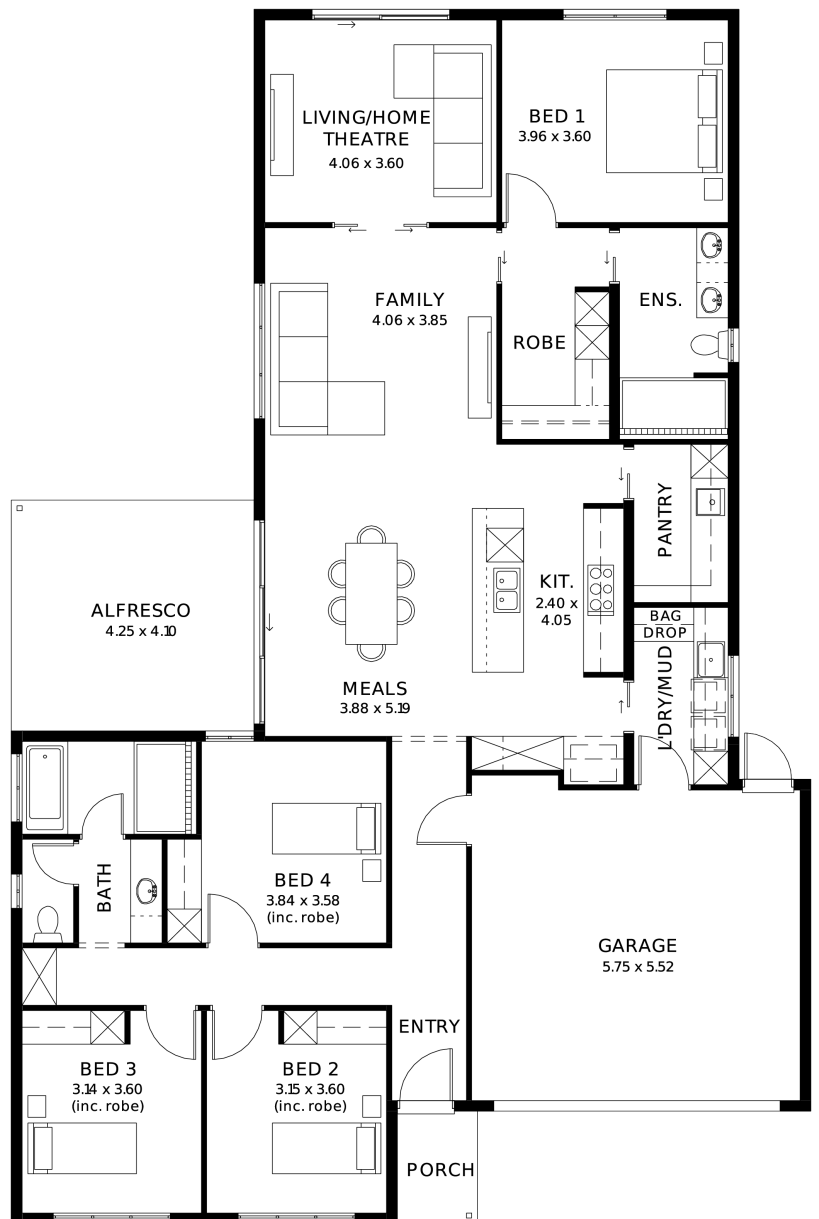
from **\$870,600***

LOT 1554
Victoria Drive
Riverlea Park
'Scarlet 3.5' (V1.4)

Lot Size 450.00m²
Design Scarlet 3.5 (V1.4)
Block Size 450m²
House Size 236m² / 25.42sqqs
Width 14.00m



 4
  2
  2
  2



SA HOUSING CENTRE

Bradley Clarke 0422 070 240

bradleyc@hickinbotham.com.au sahousingcentre.com.au

* Terms and Condition's apply. For full details go to sahousingcentre.com.au/terms-and-conditions/



**Lucky you,
all these
impressive
features are
included with
this home**

30 Week Build Time or Better

Wi-Fi controlled ducted reverse-cycle
for all year-round comfort

6.6kw Solar system to combat rising
energy prices

2.7m High ceilings throughout

Fixed price footings, site costs and
encumbrance compliance included

7 Star energy compliant

900mm Stainless steel appliances +
Zenith stone benchtops

Soft-close cabinetry throughout

Butler's Pantry

Floor-to-ceiling tiling to bathrooms

Timber laminate floors to living areas
and premium carpet to bedrooms

Garage and alfresco insulation
included

25 Year Structural Guarantee