

# House and Land

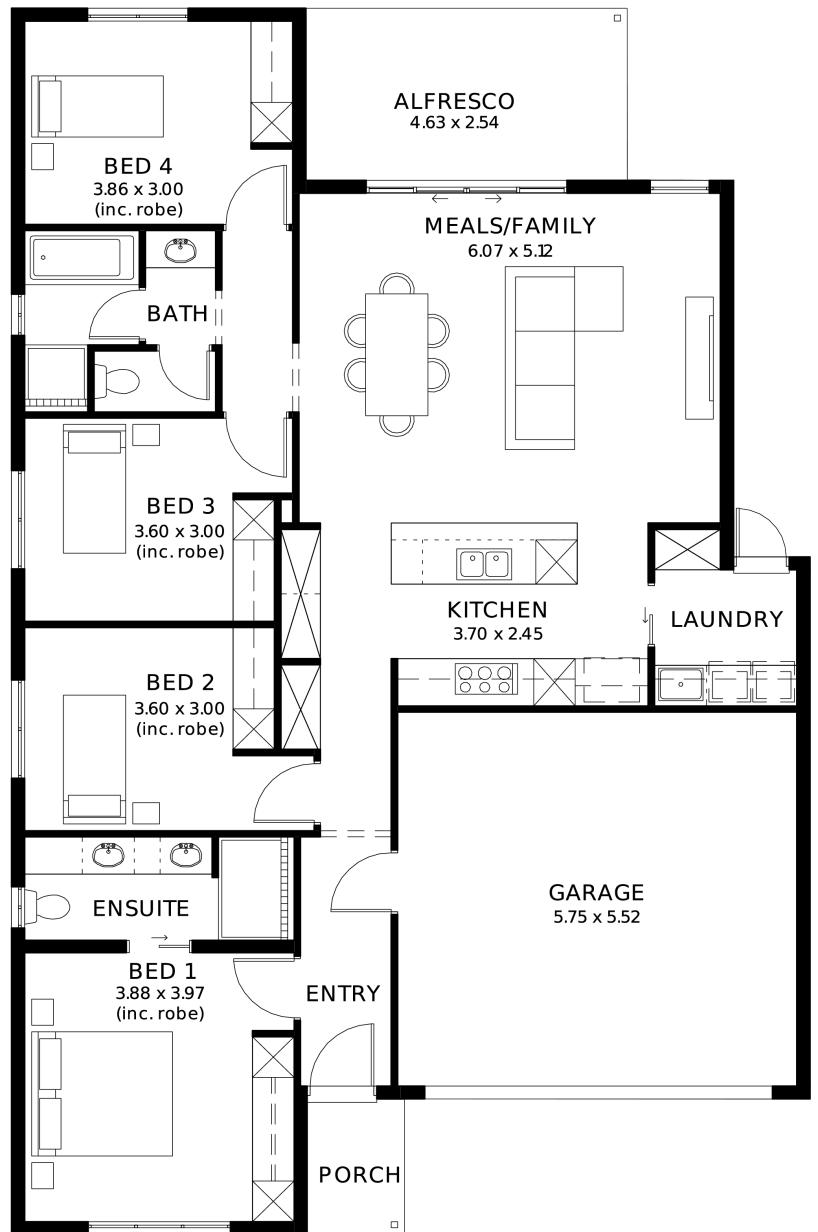
from **\$794,600\***

LOT 1256  
Frangipani Crescent  
Andrews Farm  
'Cobalt 3.5 (V1.3)'

Lot Size 375.00m<sup>2</sup>  
Design Cobalt 3.5 (V1.3)  
Block Size 375m<sup>2</sup>  
House Size 183m<sup>2</sup> / 19.77sq  
Width 11.50m



 4
  1
  2
  2



**SA** HOUSING CENTRE

**Logan Kulas 0404 971 008**

logank@hickinbotham.com.au [sahousingcentre.com.au](http://sahousingcentre.com.au)

\* Terms and Condition's apply. For full details go to [sahousingcentre.com.au/terms-and-conditions/](http://sahousingcentre.com.au/terms-and-conditions/)



**Lucky you,  
all these  
impressive  
features are  
included with  
this home**

Clever 4-bedroom design ideal for low-maintenance living

Designer kitchen with stone benchtops, 900mm appliances & walk-in pantry

Private main suite with ensuite

Built-in robes to remaining bedrooms

Open-plan living and dining designed for everyday comfort

2700m High ceilings throughout

2340mm High internal & external doors throughout

Ducted reverse-cycle air conditioning with Wi-Fi control

Complete flooring package - timber laminate & carpet throughout

6.6kW solar system for long-term efficiency

Alfresco included

Driveway, paths, stormwater & essential external works included

30 Week Build Time Guarantee for added certainty and confidence

Streamlined, no-selection build process for a faster, more reliable build