

House and Land

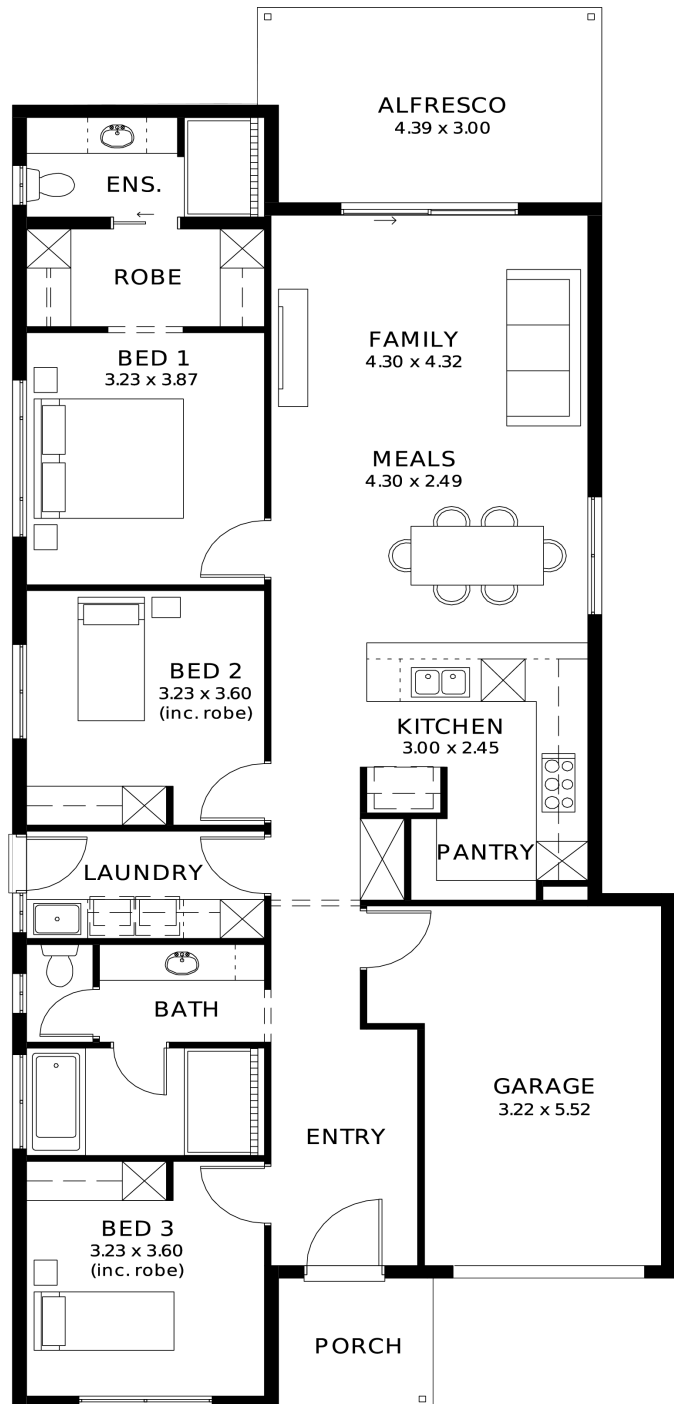
from **\$664,100***

LOT 505
Arcadia Way
Encounter Bay
'Pewter 3.5' (V1.4)

Lot Size 270.00m²
Design Pewter 3.5 (V1.4)
Block Size 270m²
House Size 168m² / 18.12sq
Width 9.00m



3 1 2 1



SA HOUSING
CENTRE

Dallas Chivers 0405 808 434

dallasc@sahousingcentre.com.au sahousingcentre.com.au

* Terms and Condition's apply. For full details go to sahousingcentre.com.au/terms-and-conditions/



**Lucky you,
all these
impressive
features are
included with
this home**

Seascape Estate - Encounter Bay

Build with the best 71 years of helping South Australians

The number one builder for over 20 years

Genuine ALL INCLUSIVE pricing

5-Month Build Time (from foundation pour) - fast & efficient

Transparent & Comprehensive - no surprises, no hidden costs

Stress-Free Building Experience - streamlined from start to finish

Thoughtfully Designed Home - created to enhance everyday living

Choice of Premium Facades - elevate your street appeal

Upgrade Option to Aspire Inclusions - premium luxury at your fingertips

Hebel AAC External Walls - enhanced energy efficiency & acoustic comfort

Colorbond Roofing & 6.6kW Solar System - long-lasting and sustainable

Air con, flooring, 900mm appliances, floor-to-ceiling tiling just to name a few inclusions

Comprehensive Insulation - superior year-round climate control

Gourmet Kitchen - solid surface benchtops, soft-close cabinetry & premium appliances

Luxury Bathroom & Laundry - elegant fixtures & smart storage solutions

Stylish Interior Finishes - high ceilings (2700mm), modern detailing

Advanced Electrical Inclusions - ring doorbell, Wi-Fi controlled air conditioning & more

Turnkey Finish - includes perimeter & driveway paving, stormwater & termite protection

Footings & Site Works Included

Price Valid for 14 Days - secure your package today

Phone and Appointment to bring your new home to life