

House and Land

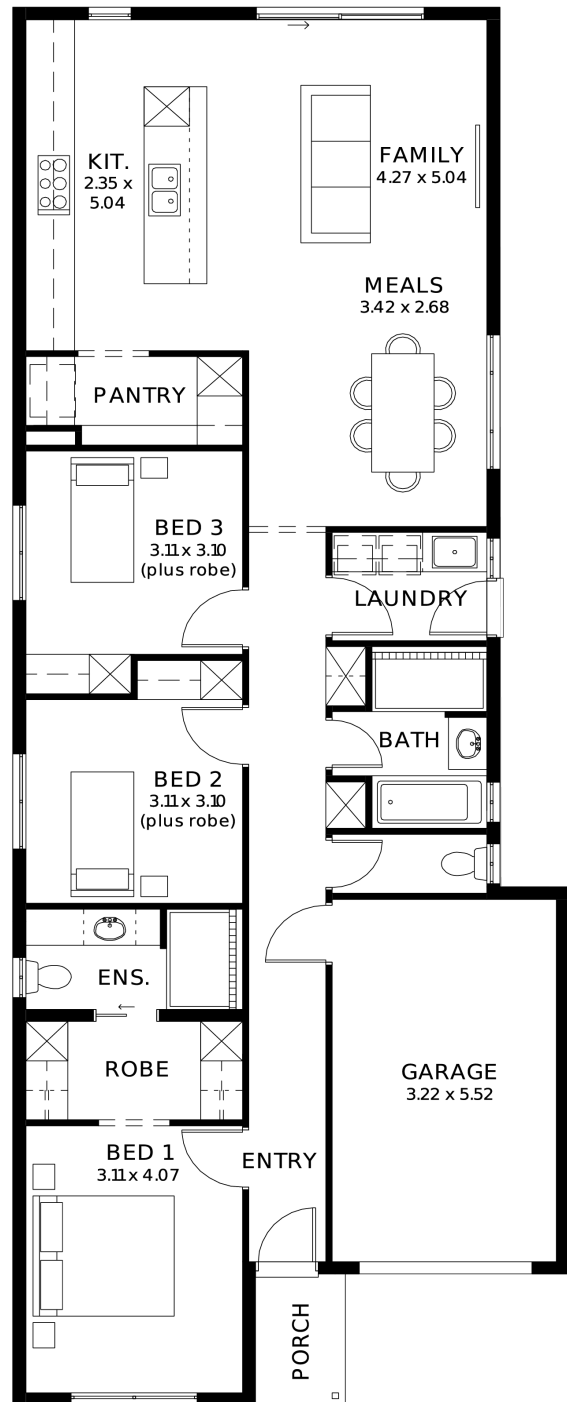
from **\$677,400***

LOT 513
Chillingworth Court
Encounter Bay
'Ivory 3.5' (V1.3)

Lot Size 300.00m²
Design Ivory 3.5 (V1.3)
Block Size 300m²
House Size 150m² / 16.21sq
Width 8.00m



3 1 2 1



SA HOUSING CENTRE

Sandy Whitford 0480 486 561

sandyw@hickinbotham.com.au sahousingcentre.com.au

* Terms and Condition's apply. For full details go to sahousingcentre.com.au/terms-and-conditions/



**Lucky you,
all these
impressive
features are
included with
this home**

Ivory Costal Home

House and Land Package information

Secure your future home now - no surprises, we are the all-inclusive Builder

All-inclusive Building Package

30 Week Build Time Guarantee - from the time we can access the property and pour your slab, reliable turnaround

Premium Inclusions

Ducted reverse-cycle air conditioning with Wi-Fi control

6.6kW Solar system - reduce your energy bills from day one

2700mm High ceilings throughout - create a spacious, airy feel

Footings and site costs that meet your land encumbrance included

Driveway, perimeter path & stormwater system included

7 Star Energy Complaint

Designer Kitchen & Bathrooms

900mm Stainless steel oven and cooktop with solid surface benchtops

Soft-close joinery throughout

Butler's pantry with solid surface benchtops

Semi-frameless shower screens, tiled ledges & premium tapware

Full wall tiling to bathrooms

Stylish Interiors

Timber-look floors to living areas; plush carpet to bedrooms & theatre rooms

2340mm High internal doors + cavity sliders

Built-in robes with mirrored doors; WIR with shelving and drawers

Awning windows to living areas

Clipsal Iconic switches and ample double power points, TV & data points

Laundry, Storage & Garage

Overhead cupboards, pull-out bin, broom storage in laundry

Panel lift garage door with remote

Garage and alfresco insulation included

Outdoor Living & Finishes

Tiled veranda, alfresco & porch (where applicable to plan)

Gas BBQ point, garden taps

Termite barrier

Colourbond roof with 25-degree pitch

Peace of Mind

3 Month Maintenance Period

25 Year Structural Warranty