

# House and Land

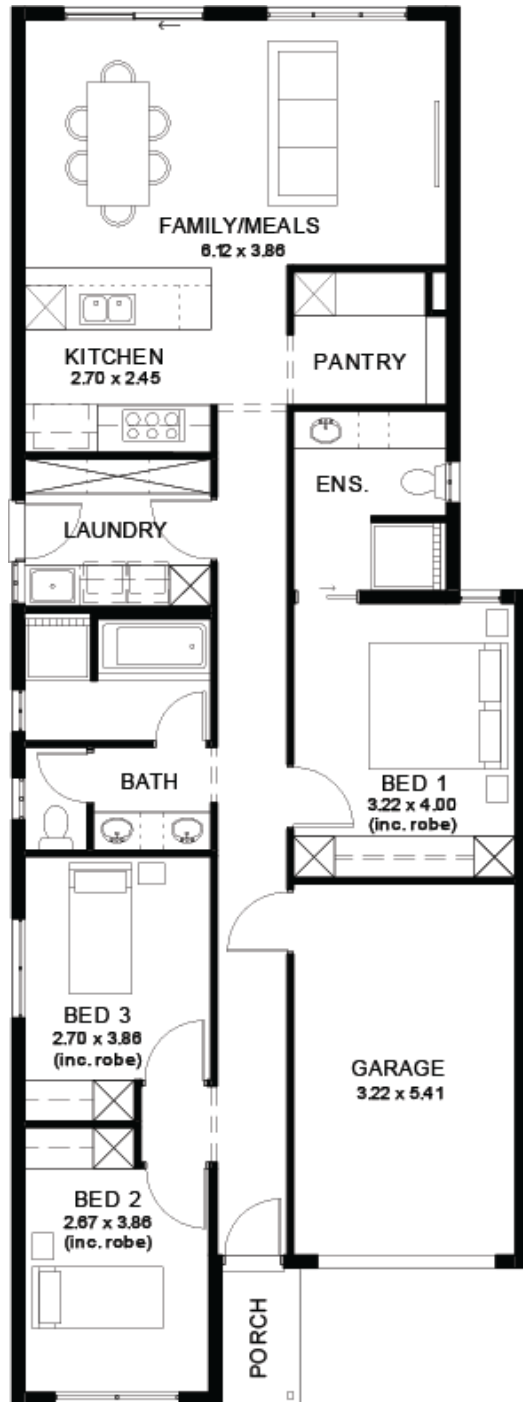
from **\$717,700\***

LOT 716  
Petherton Road  
Andrews Farm  
'Lime 3.5 (V1.3)'

Lot Size 300.00m<sup>2</sup>  
Design Lime 3.5 (V1.3)  
Block Size 300m<sup>2</sup>  
House Size 137m<sup>2</sup> / 14.83sq  
Width 7.50m



3 1 2 1





**Lucky you,  
all these  
impressive  
features are  
included with  
this home**

Built in 30 weeks, \$1k Deposit, what's not to love!!

With over 95 standard inclusions, here's a few we think you'll like:

Reverse cycle air-conditioning - zoned

6.6kW Solar

All carpet and flooring

Floor-to-ceiling tiles in wet areas

Driveway paved

Perimeter path paving

External power points

External gas BBQ point

Garden taps, front x1, back x2

Porch tiled

External downlight to front porch

Wall stops to internal doors

TV points

Double power points throughout

900mm Appliances

Stainless steel dishwasher

Under bench microwave provision with pot draw

2.7m High ceilings

2.3m High doors

Door bell with chime

What are you waiting for? Enquire today to take the first step towards your home ownership dream

Get in touch today or visit me in person at the Brookmont display in Andrews Farm