

House and Land

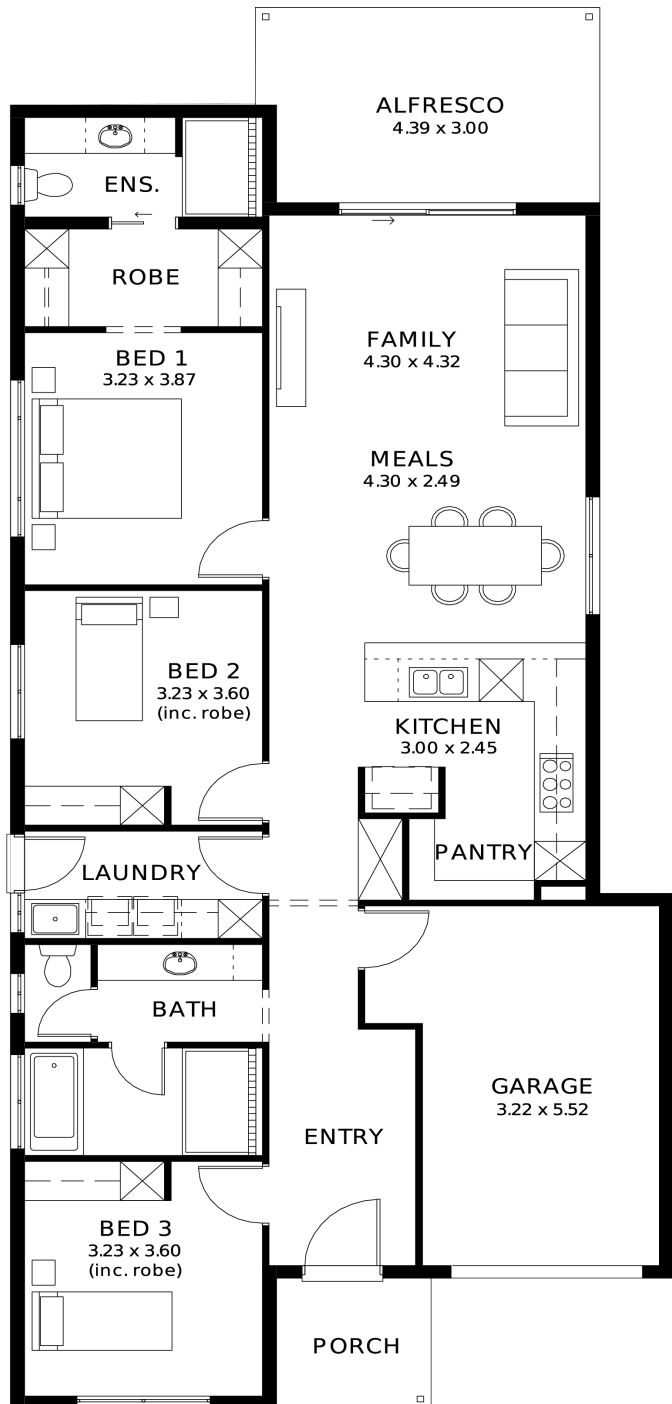
from **\$774,800***

LOT 632
New Road
Mount Barker
'Pewter 3.5 (V1.4)'

Lot Size 328.00m²
Design Pewter 3.5 (V1.4)
Block Size 328m²
House Size 168m² / 18.12sq
Width 9.00m



3 1 2 1



SA HOUSING CENTRE

Matt Tortorella 0414 840 067

mattt@hickinbotham.com.au sahousingcentre.com.au

* Terms and Condition's apply. For full details go to sahousingcentre.com.au/terms-and-conditions/



**Lucky you,
all these
impressive
features are
included with
this home**

30 Week Build Guarantee for peace of mind

Choice of premium facades to suit your personal style

Thoughtfully designed, well-planned floorplan for modern living

2.7m High ceilings enhancing space and natural light

Entertainer-style kitchen with quality finishes, perfect for hosting

900mm Stainless steel appliances + Zenith stone benchtops

Full-height tiling to ceiling in bathroom and ensuite

Ducted reverse cycle air conditioning with Wi-Fi controller

6.6kW Solar package

Interior colour selections by some of Adelaide's leading designers

Driveway paving, stormwater connection, and termite protection included