

House and Land

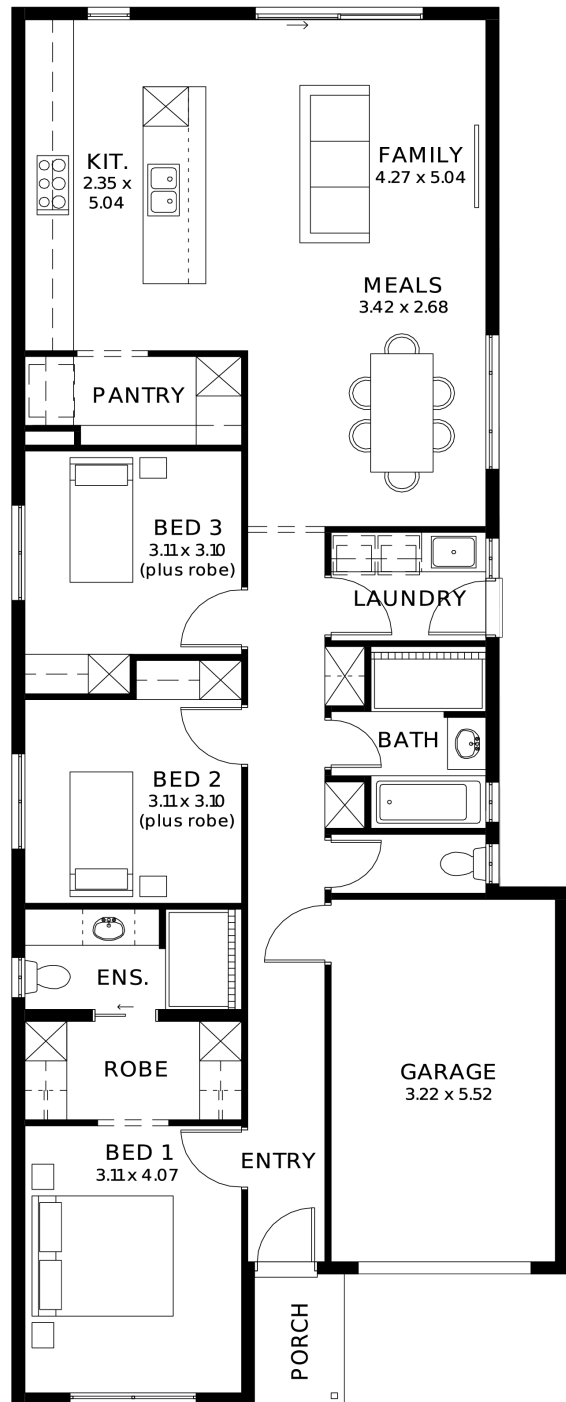
from **\$722,200***

LOT 1257
Frangipani Crescent
Andrews Farm
'Ivory 3.5 (V1.3)'

Lot Size 300.00m²
Design Ivory 3.5 (V1.3)
Block Size 300m²
House Size 150m² / 16.21sq
Width 8.00m



3 1 2 1





**Lucky you,
all these
impressive
features are
included with
this home**

Clever 3-bedroom design ideal for low-maintenance living

Designer kitchen with Zenith Surface benchtops, 900mm appliances & walk-in pantry

Private main suite with walk-in robe & ensuite

Built-in robes to remaining bedrooms

Open-plan living and dining designed for everyday comfort

2700mm High ceilings throughout

2340mm High internal & external doors throughout

Ducted reverse cycle air conditioning with Wi-Fi control

Complete flooring package - timber laminate & carpet throughout

6.6kW Solar system for long-term efficiency

Driveway, paths, stormwater & essential external works included

30 Week Build Time Guarantee for added certainty and confidence

Streamlined, no-selection build process for a faster, more reliable build