

# House and Land

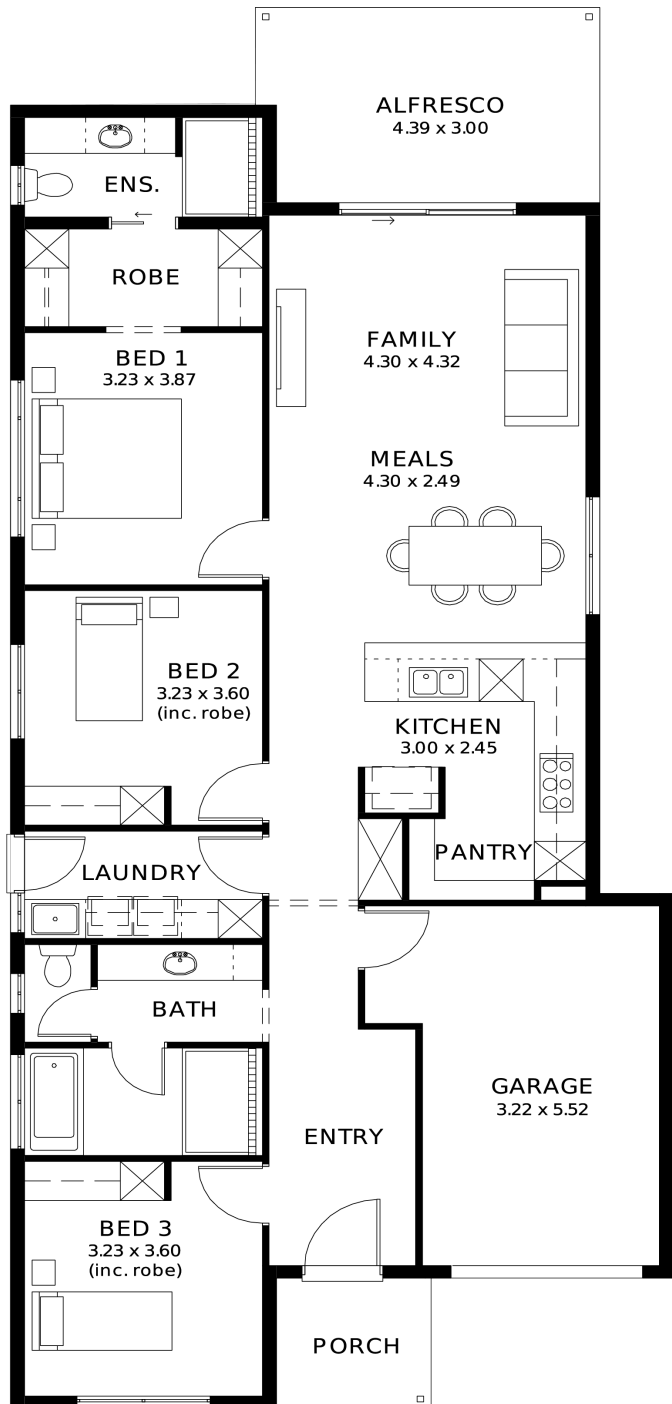
from **\$784,100\***

LOT 45  
Trillion Street  
Angle Vale  
'Pewter 3.5 (V1.4)'

Lot Size 350.00m<sup>2</sup>  
Design Pewter 3.5 (V1.4)  
Block Size 350m<sup>2</sup>  
House Size 168m<sup>2</sup> / 18.12sqs  
Width 9.00m



 3
  1
  2
  1





**Lucky you,  
all these  
impressive  
features are  
included with  
this home**

Land titled September 2026

This will sell fast!!

**INCLUSIONS**

Driveway and perimeter paving

Stormwater

Footings included

Garage with remote control units to panel lift door

2700mm Ceilings with high doors

Ensuite to Bed 1

Full-height tiling to Bathrooms

900mm Cooktop, oven and rangehood

Stone benchtop to Kitchen

6.6kW Solar

Built-in robes to Bedrooms

Plenty of built-in storage

Carpet to Bedrooms

Timber flooring to remainder

Tiled wet areas

Ducted and zoned reverse cycle AC

Colorbond facias and gutters

Overhead cupboards to Kitchen

Instantaneous gas hot water

Keylocks to windows

Smoke detectors