

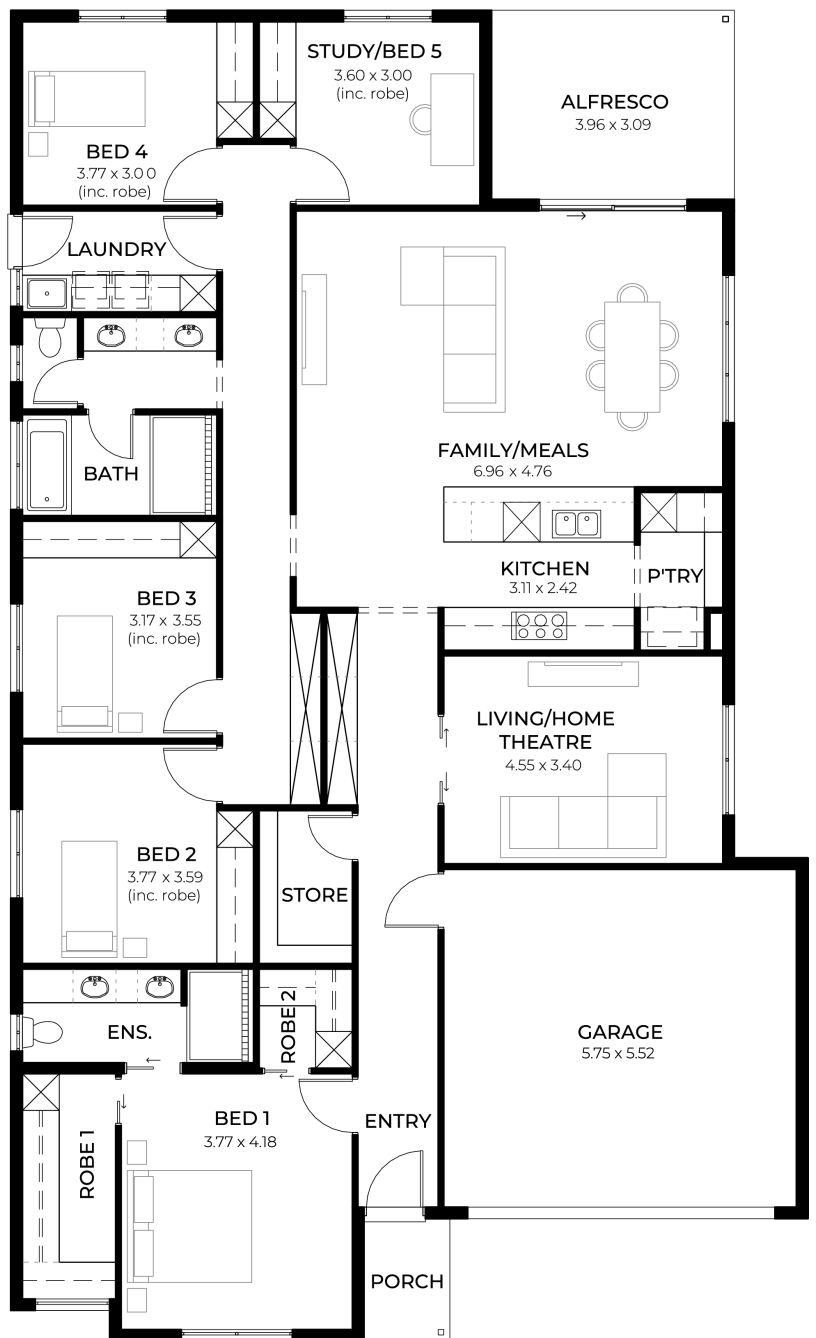
# House and Land

from **\$792,600\***

LOT 1015  
 Yeatman Way  
 Mallala  
 'Ochre 5.0' (M1.1)



Lot Size 507.00m<sup>2</sup>  
 Design Ochre 5.0 (M1.1)  
 Block Size 507m<sup>2</sup>  
 House Size 251m<sup>2</sup> / 27.05sqs  
 Width 13.00m  
 Depth 21.00m



**Joanne Kountourogiannis 0432 041 447**

joanneko@sahousingcentre.com.au [sahousingcentre.com.au](http://sahousingcentre.com.au)

\* Terms and Condition's apply. For full details go to [sahousingcentre.com.au/terms-and-conditions/](http://sahousingcentre.com.au/terms-and-conditions/)



**Lucky you,  
all these  
impressive  
features are  
included with  
this home**

Upgraded facade

Driveway and perimeter paving

Stormwater

Footings included

Garage with remote control units to  
panel lift door

2700mm ceilings with high doors

Ensuite to Bed 1

Full height tiling to bathrooms

900mm cooktop, oven and rangehood

Stone benchtop to kitchen

6.6kW Solar

Built in robes to Bedrooms

Plenty of built in storage

Carpet to Bedrooms

Timber flooring to remainder

Tiled wet areas

Ducted and zoned reverse cycle AC

Colorbond facias and gutters

Overhead cupboards to kitchen

Instantaneous gas hot water

Keylocks to windows

Smoke detectors